

Industrial Vacuum Cleaner 500 - Series



Vacuum heads



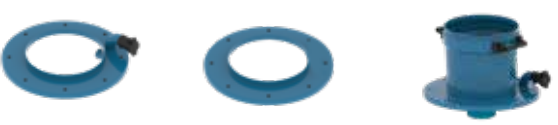
NE S200

NE S50

NEL S50

See table on page 2-3 for data and item numbers.

Adapters




43622300
Adapter lid with inlet ø51

43622304
Adapter lid without inlet

43939046
Control filter adapter with inlet ø51. 2 x 43670001 is needed.

Filters



Cartridge

Filter bag

See table on page 4 for item numbers.


Trolleys



43730001
Trolley with 2 wheels

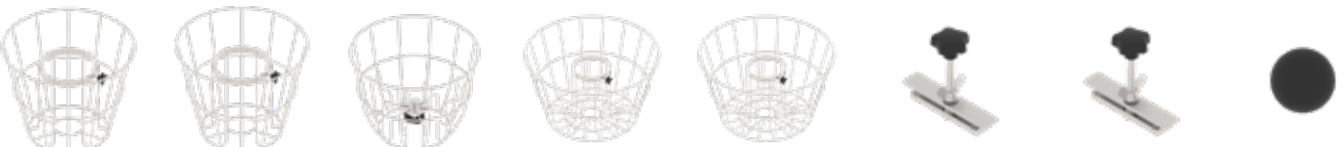
43731001
Tippable trolley

Containers



43360001	Container S200 without inlet
43362001	Container S200 inlet ø51
43364001	Container S200 inlet ø76
43364002	Container S200 inlet ø76, ball valve R2
43366001	Container S200 inlet ø51, ball valve R2
43366002	Container S200 without inlet, ball valve R2
43366011	Container S200 inlet ø51, ball valve R2 ecc locks
43380001	Container S200 AISI 316L without inlet

Parts for filter assembly



43660001
Basket S50

43660003
Basket S50 AISI 316L

43660102
Basket S50 for cartridge filter AISI 316L

43950011
Basket S200

43950012
Basket S200 AISI 316L

43140009
Clamp for cartridge filter AISI 316L
Not to be used in combination with 43660102

43140010
Clamp for cartridge filter
Not to be used in combination with 43660102

43660300
Float ball S50/S200

Industrial Vacuum Cleaner 500 - Series

Vacuum heads

Nederman offers two types of vacuum heads for the configured range:

1. Nederman Electric (NEL):

Electric, 1-phase, with two (NEL2) or three (NEL3) carbon brush bypass motors. The number of motors directly have an impact on the airflow that is generated. This vacuum head is suitable for general industrial vacuum cleaning but these types of motors are not suitable for continuous operation because of the carbon brush technology, brushes needs to be replaced within about 900 hours.


2. Nederman Ejector (NE):


Compressed air driven vacuum head with outstanding performance when it comes to vacuum level generation, this allows quick recovery of material and/or the possibility to use longer hoses. The ejectors are extremely reliable, long lasting and simple to use. The design of the ejector allows immediate vacuum, when the unit starts, and it is very suitable for continuous operation.

Generally the NEL-head is suitable for hose lengths up to 10m but it also depends a lot on the application. Light material in small amounts typically allows longer hoses without any major effect on the suction capacity. Vice versa, heavy materials in larger amount typically demands a vacuum head with more vacuum. To maximize capacity, always strive to use as short hose as possible for the application.

The NE-heads allows longer hoses, if needed, due to the vacuum level that they produce.

More information about the different vacuum heads are available on the following pages.

	NE - Air vacuum head				
	Size	Compressed air consumption [Nm ³ /min]	Max vacuum [-kPa]	Max air flow [Nm ³ /h]	Max. hose length [m]
	NE22	1.0	21	306	10
	NE32	1.6	31	342	10
	NE42	2.2	42	360	20
	NE52	3.0	52	342	30
	NE56	2.7	25	564	10
	NE64	4.3	68	330	40
	NE66	4.1	38	630	20
	NE74	5.3	78	318	40
	NE76	5.4	48	690	30
	NE86	9.5	73	540	40
	NE96	8.6	68	660	40

	NEL - Electric vacuum head					
	Size	Power [kW]	Voltage [V]	Pressure [-kPa]	Max air flow [Nm ³ /h]	Max. hose length [m]
	NEL2R	1.6	230	21,5	312	10
	NEL3R	2.4	230	21,5	460	10
	NEL3RT	2.4	230	21,5	460	10
	NEL2	1.6	110	20	312	10
	NEL3	2.4	110	20	460	10

Industrial Vacuum Cleaner 500 - Series

Item numbers - NE Vacuum Heads S50

Size	Standard	Inlet	Outlet	in-/outlet	Standard SS	Inlet SS	Outlet SS	In-/outlet SS
NE22	43035000	43035022	43035011	43035033	43035088	43035110	43035099	43035121
NE32	43035001	43035023	43035012	43035034	43035089	43035111	43035100	43035122
NE42	43035002	43035024	43035013	43035035	43035090	43035112	43035101	43035123
NE52	43035003	43035025	43035014	43035036	43035091	43035113	43035102	43035124
NE56	43035004	43035026	43035015	43035037	43035094	43035116	43035105	43035127
NE64	43035005	43035027	43035016	43035038	43035092	43035114	43035103	43035125
NE66	43035006	43035028	43035017	43035039	43035095	43035117	43035106	43035128
NE74	43035007	43035029	43035018	43035040	43035093	43035115	43035104	43035126
NE76	43035008	43035030	43035019	43035041	43035096	43035118	43035107	43035129
NE86	43035009	43035031	43035020	43035042	43035097	43035119	43035108	43035130
NE96	43035010	43035032	43035021	43035043	43035098	43035120	43035109	43035131

Item numbers - NE Vacuum Heads S200

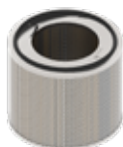
Size	Standard	Inlet	Outlet	in-/outlet	Standard SS	Inlet SS	Outlet SS	In-/outlet SS
NE22	43035044	43035066	43035055	43035077	43035132	43035154	43035143	43035165
NE32	43035045	43035067	43035056	43035078	43035133	43035155	43035144	43035166
NE42	43035046	43035068	43035057	43035079	43035134	43035156	43035145	43035167
NE52	43035047	43035069	43035058	43035080	43035091	43035157	43035146	43035168
NE56	43035048	43035070	43035059	43035081	43035138	43035160	43035149	43035171
NE64	43035049	43035071	43035060	43035082	43035136	43035158	43035147	43035169
NE66	43035050	43035072	43035061	43035083	43035139	43035161	43035150	43035172
NE74	43035051	43035073	43035062	43035084	43035137	43035159	43035148	43035170
NE76	43035052	43035074	43035063	43035085	43035140	43035162	43035151	43035173
NE86	43035053	43035075	43035064	43035086	43035141	43035163	43035152	43035174
NE96	43035054	43035076	43035065	43035087	43035142	43035164	43035153	43035175

Item numbers - NEL Vacuum Heads S50

Voltage	Item no.	Name	Description
230 V	43052001	NEL2R	2 motors with radio filter, 50/60Hz
	43054100	NEL3R	3 motors with radio filter, 50/60Hz
	43054200	NEL3RT	3 motors with radio filter and thermal switch, 50/60Hz
110 V	43054302	NEL2 with hooks	2 motors, S50, 50/60Hz, with hooks
	43054300	NEL3	3 motors, S50, 50/60Hz

Industrial Vacuum Cleaner 500 - Series

Filters



Cartridge



Filter bag

Item no.	Area (m ²)	Washable	Class	AISI 316	Protection plate	Antistatic
43120100	2,38	No (cellulose)	M	No	No	No
43120200	1,56	No (cellulose)	H13	No	No	No
43120300	2,38	Yes (polyester)	M	No	No	No
43130001	2,38	No (cellulose)	M	No	Yes	No
43130500	1,56	No (cellulose)	H13	No	Yes	No
43120304	2,38	Yes (polyester)	M	Yes	Yes	No
40377234	2,38	No (cellulose)	M	No	No	Yes
40377235	1,56	No (cellulose)	H13	No	No	Yes
40377236	2,38	Yes (polyester)	M	No	No	Yes
40377237	2,38	Yes (polyester)	M	Yes	Yes	Yes
40377238	2,38	No (cellulose)	M	No	Yes	Yes
40377239	1,56	No (cellulose)	H13	No	Yes	Yes

Item no.	Type	Area (m ²)	Antistatic	Size
43110100	Std.	0,35	No	S50
43110101	Coarse	0,35	No	S50
43110200	Std.	0,35	Yes	S50
43110300	Std.	0,59	No	S200
43110301	Coarse	0,59	No	S200
43110400	Std.	0,59	Yes	S200

Configuration Guide for 500 - Series

Vacuum head

There are three different types to choose from:

1. NE System 50 (S50) - Ejector, compressed air drive (10 different sizes with different capacities)
2. NE System 200 (S200) - Ejector, compressed air drive (10 different sizes with different capacities)
3. NEL S50 - Electric, 1-phase (different sizes, 2 or 3 motors)

S50 means \varnothing 400mm and S200 means \varnothing 600mm.

NE S200 ejectors fits directly onto to the container while NE S50 and NEL S50 needs an adapter ring or control filter adapter.

Ejectors can be equipped with for example inlet in the lid and centralized outlet for the exhaust air.

Adapters

If vacuum top S50 is chosen, an adapter lid or control filter adapter is needed. Adapter lid can be delivered with or without an inlet. Note that when using this solution we recommend to use S50 basket.

A vacuum top will rest on the adapter lid without fasteners. Vacuum will seal it properly during operation.

Filters and parts for filter assembly

If there is no inlet on the ejector or the adapter, a filterbag size S200 should be chosen as main filter.

Cartridge filter as main filter is also possible but note that there is no filter cleaning possibilities on the 500-Series, so usage with fine dust is not recommended.

If you decide to go for an ejector S200 with inlet in the lid, you can not use a filter bag, only basket with float ball for liquids or a cartridge filter.

If you need inlet on the top (to maximize the volume in the bin) and filter bag you should use S50 head (ejector or electric) with adapter lid with inlet together with filter bag and basket S50 and float ball.

NOTE! Filterbag can not be used beneath the control filter adapter.

A filter bag needs a basket (S50 or S200 depending on the filter). Inside the basket a float ball or cartridge filter (secondary filter) can be used. It is not possible to fit both in a basket. Note that the baskets are different depending on if a float ball or cartridge should be fitted internally.

When using a control filter adapter with inlet the control filter should be installed on the cup of the vacuum top.

Such a control filter should have external metal protection to prevent any damages when removing the vacuum top.

Containers

If there is no inlet on the lid or adapter, a container with inlet must be chosen. Inlet sizes, material and discharge possibilities vary according to the 500-series map.

Trolleys

All possible configurations fits on any of the trolleys.