

## Mounting instruction - Air cleaning equipment, FilterBox



The cleaning equipment consists of:

- Compressed air supply pipe and valve,
- Compressed air supply pipe bracket and joint,
- Solenoid and wiring,
- A short length of braided air supply hose and jubilee clip.

### Prior to fitting of the equipment

Isolate the unit electrically and remove the supply cable from the socket.  
Remove the fan from the unit by loosening and removal of the fan securing bolts (H5 Allen wrench).  
It is not imperative to remove the filter cartridge from the unit.



The fan / motor securing bolts



The fan / motor removed

### Fitting and securing the compressed air supply pipe



Joint recess



Joint inserted into the recess



Compressed air supply pipe  
with the joint



Securing bracket

1. Insert the joint into the recess as shown above.
2. Fit the compressed air supply pipe into the joint.
3. Secure the compressed air supply pipe with the bracket provided (T 20 star wrench).
4. Insert a self tapping screw into the unit behind the compressed air supply pipe pivot in order to lift the pipe and so prevent the pipe from resting onto the inner surface of the filter cartridge.

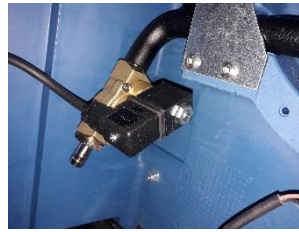
## Fitting and securing the solenoid and wiring



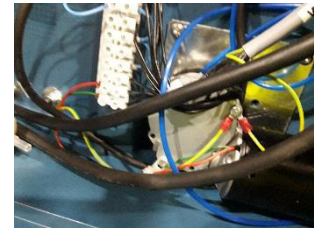
Solenoid without the seal



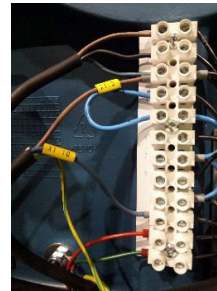
Solenoid with the seal



Solenoid with securing screw



Earth wire secured



Solenoid wires connected to the terminal block

1. Ensure that the seal is placed onto the solenoid.
2. Firmly push the supplied part onto the three pins, located at the valve, and tighten the screw (Phillips).
3. Secure the earth wire to the terminal shown (T 20 star wrench).
4. Secure the two other wires to the terminal block (X1-3 to black wire, No 9 and X1-10 to black wire, No 8 which in this case are to terminals 3 and 10).

## Fitting and securing the compressed air supply hose



Cable cover



Hose fed to the unit clean side



Hose connected to the valve



Compressed air bayonet fitting



Compressed air connected

1. Loosen and remove the cable cover from the unit (T 20 star wrench).
2. Feed the compressed air supply hose into the unit clean side.
3. Push the hose firmly onto the fitting at the valve and secure with the jubilee clip provided.
4. Replace the cable cover.
5. Push a compressed air bayonet fitting into the hose and secure with a jubilee clip.
6. Connect the compressed air supply to the hose and run the cleaning cycle -the filter cartridge will rotate and compressed air will be blown into the filter as the solenoid operates.

## Upon completion of the fitting

Re install the fan and motor to the unit and tighten the securing bolts.  
Ensure that the compressed air supply is regulated to 7 bar and that the supply is dry.  
Enable power to the unit.