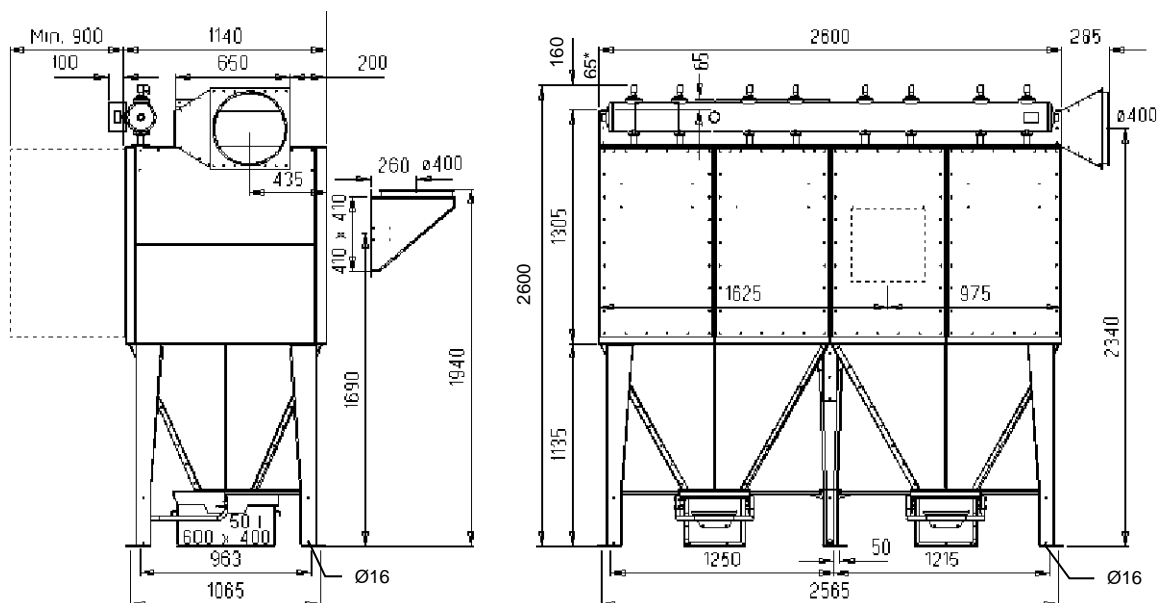


## FMK(Z)25 Cassette Filter

### FMK(Z)25 - 8E with bin for discharge



All dimensions in mm.  
If 50 liter bin with rollers, add 90 mm.  
\* 65 mm to be included at top mounted fan.

#### Filter material

Filter cassette materials for most applications are available, dependent on dust type, dust load and efficiency requirements.

#### Inlet options

Dia. 160, 250, 315, 400, 500 mm.

Dia. 500: Two 400 mm inlets are assembled in one with a T-pipe.

#### Outlet options

Dia. 160, 250, 315, 400, 500, 560 and 630 mm.

Dia. 500: also available on top.

Dia. 560 and 630: high capacity clean air duct is necessary.

Rectangular flange possible.

#### Access door

Hinged door is optional.

#### Bin

Bin 50 or 100 litres.

See separate leaflet.

Specifications	Standard
Filter housing	Galvanised steel, 2 mm
Filter cassette material	NF 100 (polyester, 500 g/m <sup>2</sup> )
Air inlet, diameter	400 mm
Door	Bolted door (lift off type)
Cleaning of cassettes	Clean, dry compressed air, 6 bar, 24V DC Connection: 1" pipe thread Average normal consumption: 4-rows: < 7,0 Nm <sup>3</sup> /h 6-rows: < 10,5 Nm <sup>3</sup> /h Down time cleaning: 2,2 Nm <sup>3</sup> #
Controller	DFC-08M (voltage supply 230V / 110V)
Max. vacuum	6000 Pa
Max. overpressure	1500 Pa (3000 Pa at FMKZ)
Temperature	-20°C to +70°C

# Down time cleaning at 6 second interval time requires 27 Nm<sup>3</sup>/h compressor capacity.

Type	FMK25 - 8E	
	4-rows	6-rows
Max. air volume* (m <sup>3</sup> /h)	7,000	10,500
Filter area (m <sup>2</sup> )	58	88
Weight (kg) incl. 50 l bin, excl. fan	845	860

\* Max. air volume is dependent on the actual dust type

### Accessories

Fan, top mounted	0 to 10,500 m <sup>3</sup> /h
Filter materials	9 other media also available
Platform / ladder	Galvanised steel, 900 x 1000 mm platform and access ladder for maintenance purposes
Noise enclosure, fan	Galvanised steel
QF duct system	100 to 500 mm

### Fan

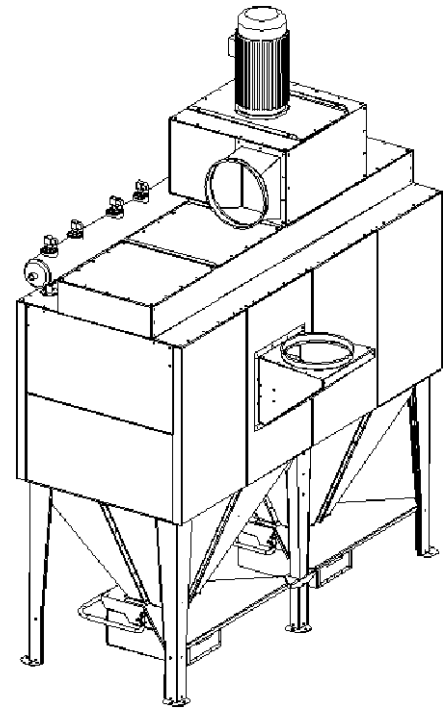
A range of fans for installation next to the filter is also available, for special pressure or air flow requirements.

### Controller

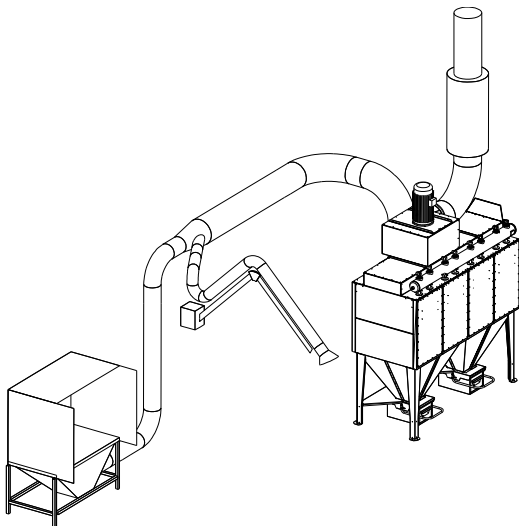
The built-in controller has indicators for power on, cleaning, stop and after-cleaning.

The controller's standard setting is for cleaning on demand when the differential pressure exceeds a pre-set value. This means that the compressed air consumption may be reduced to below 0,1 % of the total air flow. The controller also has indicators for filter pressure loss and for a high-pressure alarm.

### Standard inlet and outlet position:



### Example of possible installation of FMK25-8E with QF duct connection:



### Installation for extraction of welding fume and metallic dust.

Capacity: 7,000 m<sup>3</sup>/h – Filter load : 80 m<sup>3</sup>/m<sup>2</sup>/h

Recommended velocity of the air in the extraction pipes: 25 - 27 m/s.

### Necessary equipment for this installation:

FMK25-8E/6

Fan type: FM 831, standard motor 11 kW

Inlet diameter and position: ø 400 mm, from top

Controller: DFC-08M

Outlet diameter and position: ø 400 mm, RD 270

QF duct system: ø 160 mm to ø 400 mm

In-line air silencer ø 400 mm

Intermediate pressure arm ø125 mm

Grinding box