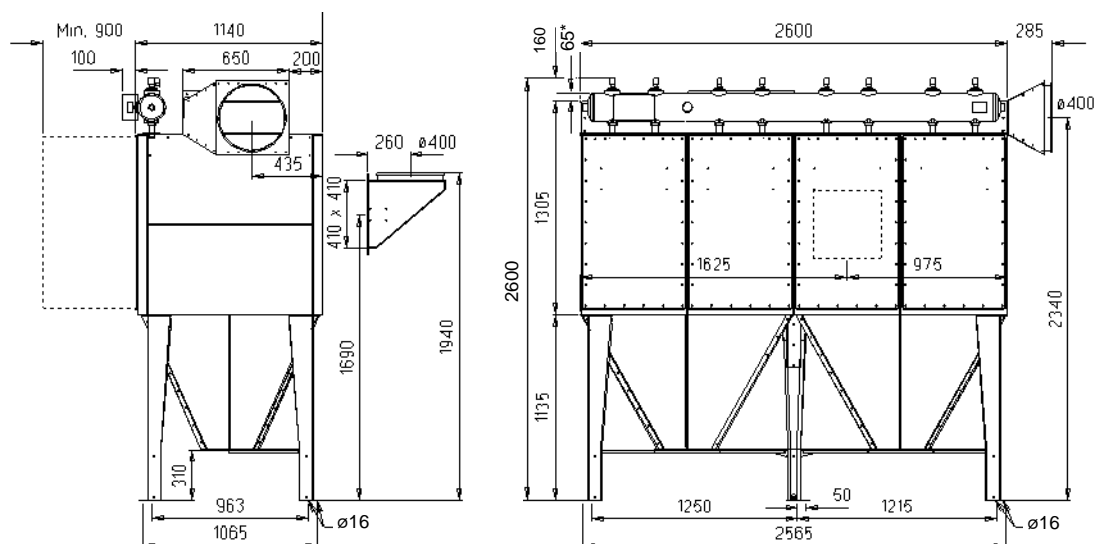


FMK(Z)25 Cassette Filter

FMK(Z)25 - 8E hopper with flange for discharge



All dimensions in mm.

* 65 mm to be included at top mounted fan.

Filter material

Filter cassette materials for most applications are available, dependent on dust type, dust load and efficiency requirements.

Inlet options

Dia. 160, 250, 315, 400, 500 mm.

Dia. 500: Two 400 mm inlets are assembled in one with a T-pipe.

Outlet options

Dia. 160, 250, 315, 400, 500, 560 and 630 mm.

Dia. 500: also available on top.

Dia. 560 and 630: high capacity clean air duct is necessary.

Rectangular flange possible.

Access door

Hinged door is optional.

Dust outlet

Hopper with 300 x 300 mm flange.

Leg extension

Extension up to 2000 mm possible. Telescopic variable 500 mm

Specifications	Standard
Filter housing	Galvanised steel, 2 mm
Filter cassette material	NF 100 (polyester, 500 g/m ²)
Air inlet, diameter	400 mm
Door	Bolted door (lift off type)
Cleaning of cassettes	Clean, dry compressed air, 6 bar, 24V DC Connection: 1" pipe thread Average normal consumption: 4-rows: < 7,0 Nm ³ /h 6-rows: < 10,5 Nm ³ /h Down time cleaning: 2,2 Nm ³ #
Controller	DFC-08M (voltage supply 230V / 110V)
Max. vacuum	6000 Pa
Max. overpressure	1500 Pa (3000 Pa at FMKZ)
Temperature	-20°C to +70°C

Down time cleaning at 6 second interval time requires 27 Nm³/h compressor capacity.

Type	FMK25 - 8E	
	4-rows	6-rows
Max. air volume* (m ³ /h)	7000	10500
Filter area (m ²)	58	88
Weight (kg), excl. fan	805	820

* Max. air volume is dependent on the actual dust type.

Accessories

Fan, top mounted	0 to 10500 m ³ /h
Filter materials	9 other media also available
Platform / ladder	Galvanised steel, 900 x 1000 mm platform and access ladder for maintenance purposes
Noise enclosure, fan	Galvanised steel
Leg extension	500, 1000, 1500 or 2000 mm
QF duct system	100 to 500 mm

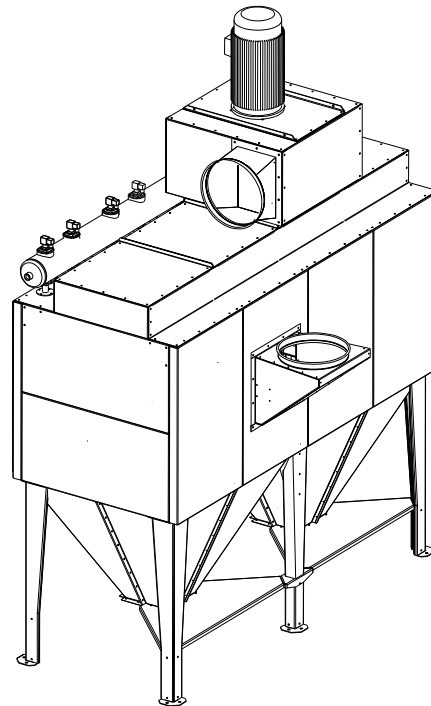
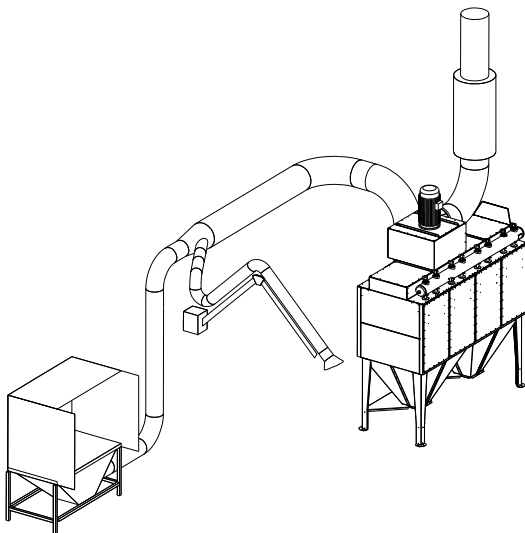
Fan

A range of fans for installation next to the filter is also available, for special pressure or air flow requirements.

Controller

The built-in controller has indicators for power on, cleaning, stop and after-cleaning.

The controller's standard setting is for cleaning on demand when the differential pressure exceeds a pre-set value. This means that the compressed air consumption may be reduced to below 0,1 % of the total air flow. The controller also has indicators for filter pressure loss and for a high-pressure alarm.

Standard inlet and outlet position:**Example of possible installation of FMK25-8E with QF duct connection:****Installation for extraction of welding fume and metallic dust.**

Capacity: 7,000 m³/h – Filter load : 80 m³/m²/h
Recommended velocity of the air in the extraction pipes: 25 - 27 m/s.

Necessary equipment for this installation:

FMK25-8E/6
Fan type: FM 831, standard motor 11 kW
Inlet diameter and position: \varnothing 400 mm, from top
Controller: DFC-08M
Outlet diameter and position: \varnothing 400 mm, RD 270
QF duct system: \varnothing 160 mm to \varnothing 400 mm
In-line air silencer \varnothing 400 mm
Intermediate pressure arm \varnothing 125 mm
Grinding box