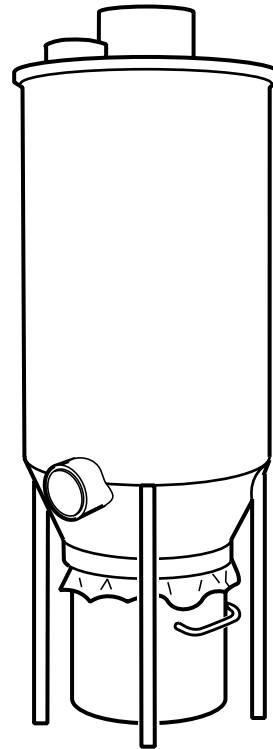


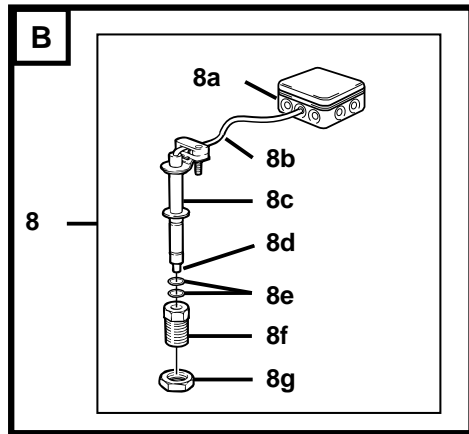
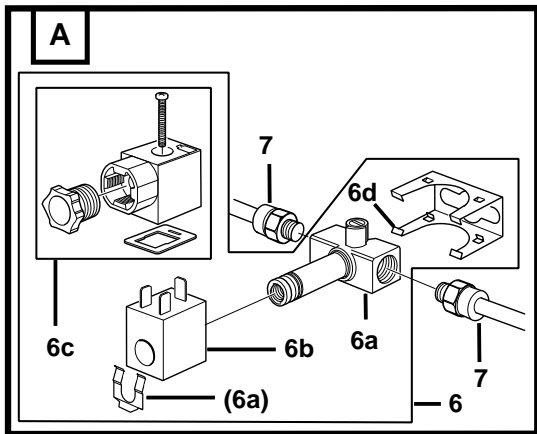
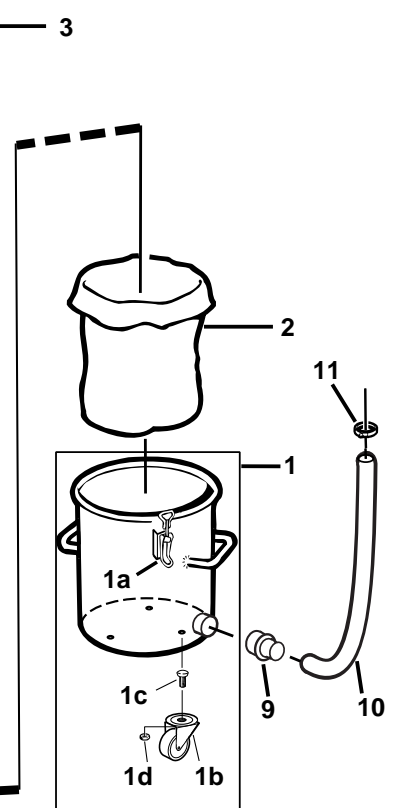
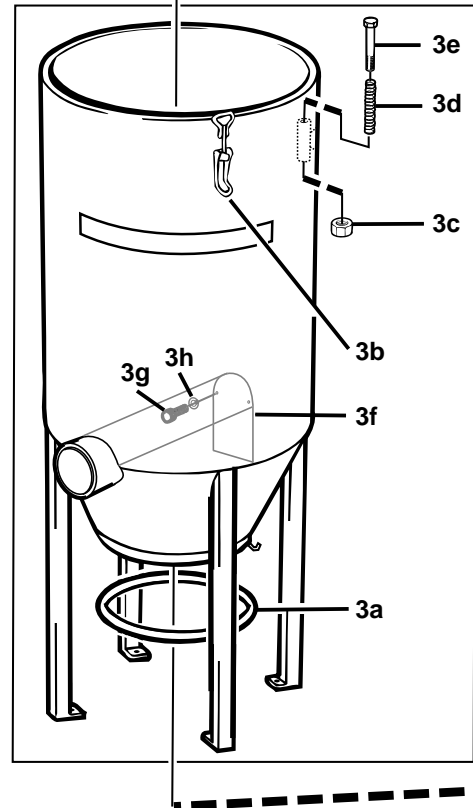
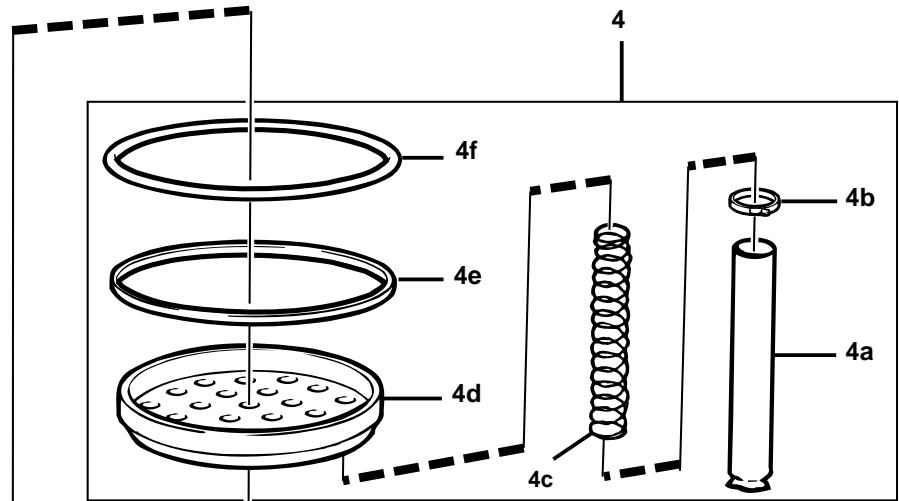
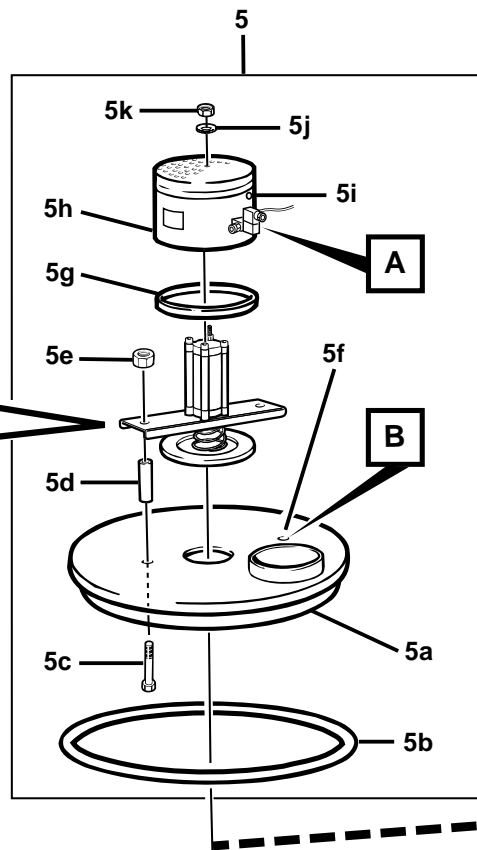
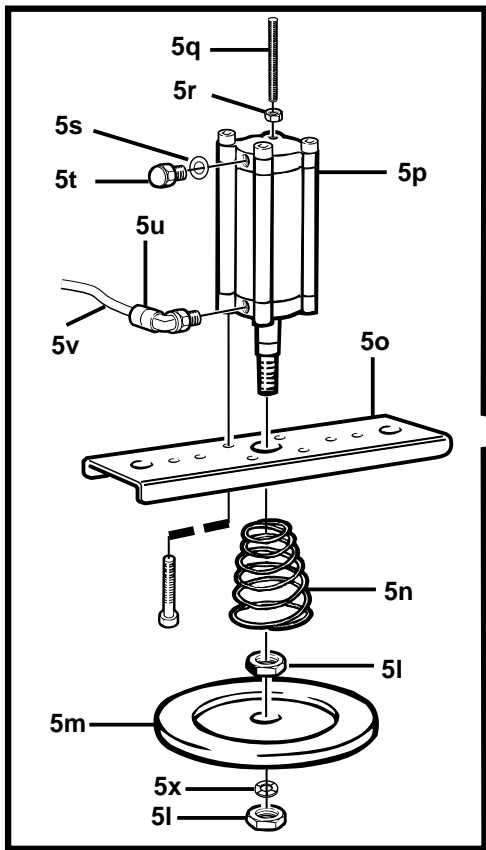
High Vacuum Systems
MX20-001-01
GEF€-11-1i

Nederman[®]
Improving your workspace



F12B

Reservdelislista - Spare Parts List - Ersatzteilliste
Liste de pieces detachées - Lista de recambios



No	Part No	Qty	Benämning	Description	Benennung	Désignation	Descripción
1	1151 00	1	Uppsamlingskärl 70 l	Bin	Staubbeimer	Seau	
1a	9020 30	2	Excenterlås	Toggle fastener	Verschluß-Griff	Grenouillère	
"	9408 00	4	Skruv MFS6x12	Screw	Schraube M6 x 12	Vis M16 x 12	
"	9418 10	4	Mutter M6	Nut	Mutter M6	Ecrou M6	
1b	0976 00	3	Länkhjul (D40 H61)	Castor (D40 H61)	Laufrollen	Roulette	
1e	9430 30	3	Skruv MVBF M8x20H fzb	Screw MVBF M8x20H fzb	Schraube MVBF M8x20H fzb	Vis MVBF M8 x 20H fzb	
1d	9419 20	3	Låsmutter M8	Locking nut M8	Mutter M8	Centre écrou M8	
2	1150 20		Plastsäck	Plastic bag	Plastiksack	Sac plastique	
3	1155 60	4	Hus F12B, cyklon ansl. Ø200	Housing F12B, cyclone	Gehäuse F12B/Cyclone	Enveloppe F12B, cyclone	
"	1168 00	4	Hus F12B, rakt inlopp Ø200	Housing F12B, straight inlet	Gehäuse F12B/gerade Einlas	Enveloppe F12B, entrée directe	
3a	9510 40	1	Cellgummilist Ø25 mm	Cellular rubber seal	Gummidichtung Ø25 mm	Joint caoutchouc 25 mm	
3b	9020 40	4	Excenterlås	Toggle fastener	Deckelverschluß	Grenouillère	
"	9412 80	8	Skruv MFS5x10	Screw	Schraube M5 x 10	Vis	
"	9418 00	8	Mutter M5	Nut	Mutter M 5	Ecrou	
3e	9419 30	3	Låsmutter M10	Locking nut	Mutter M 10 selbtsichernd	Ecrou de blocage	
3d	1154 80	3	Fjäder	Spring	Feder	Ressort	
3e	9407 00	3	Skruv M10x90	Screw	Schraube M10 x 90	Vis M10 x 90	
3f	1156 00	1	Slitgummi	Rubber wear protection	Verschleissgummi	Protection caoutchouc	
3g	9406 40	2	Skruv M10x30	Screw	Schraube M10x30	Vis M10 x 30	
3h	9422 10	2	Bricka BRB 10,5x22x2	Washer	Scheibe 10,5x22x2	Rondelle	
4	1152 00	1	Filterpaket standard	Filter package stand.	Standard	Filtre complet	
"	1157 40	1	Filterpaket PTFE	Filter package PTFE	PTFE Filtereinsatz	Filtre complet PTFE	
4a	1150 40	48	Filter standard polyester	Filter sock standard polyester	Stand. Polyesterfilterschlauch	Manche polyester	
"	1197 60	48	Filter polypropylene	Filter polypropylene			
"	1150 70	48	Filter PTFE	Filter sock PTFE	PTFE Filterschlauch	Manche polyester + PTFE	
"	1197 70	48	Filter PTFE	Filter sock PTFE			
4b	9031 80	48	Slangklämma 75	Hose clip	Schlauchschelle	Attache manche	
4c	1152 20	48	Filterfjäder	Filter spring	Filterfeder	Ressort de manche	
4d	1152 30	1	Filterhållare	Filter holder	Filtertrågerplatte	Support de filtre	
4e	9510 20	1	Kantlist plast L=2400	U-profile seal, plastic	U- Dichtung L= 2400	Joint en U plastique	
4f	9510 30	1	Cellgummilist 30x10 L=2400	Cellular rubber seal	Gummidichtung 30x10 L=240	Joint caoutchouc	
5	1167 70	1	Lock komplett	Lid complete	Filterdeckel kompl.	Tête	
5a	1155 70	1	Lock ansl. 200	Lid, outlet 200 mm	Filterdeckel einzeln	Couvercle, sortie 200 mm	
5b	9510 30	1	Cellgummilist 30x10 L=2400	Cellular rubber seal	Gummidichtung 30x10 L=240	Joint caoutchouc	
5e	9407 90	2	Skruv M12x90	Screw	Schraube M 12 x 90	Vis M12 x 90	
5d	1155 80	2	Distanzhülse	Spacer	Distanzhülse	Entretoise	
5e	9419 40	2	Låsmutter M12	Locking nut	Mutter M 12 selbtsichernd	Ecrou de blocage	
5f	9903 30	1	Plugg	Plug	Stopfen	Prise	
5g	9510 50	4	U-gummilist	U-profile seal, rubber	U-Gummidichtung	Joint en U caoutchouc	
5h	1153 50	4	Huv	Protection cap	Schutzhaube	Chapeau de protection	

No	Part No	Qty	Benämning	Description	Benennung	Désignation	Descripción
5i	9510 10	4	Genomföring gummi	Lead through, rubber	Schutzhülse	Joint de sortie	
5j	9121 70	4	Bricka BRB6,7x16x1,5	Washer	Scheibe	Rondelle	
5k	9119 10	4	Låsmutter M6	Locking nut	Mutter M6 selbtsichernd	Ecrou de blocage	
5l	9117 40	2	Mutter M16x1,5	Nut	Mutter M 16 x 1,5	Ecrou M16 x 1,5	
5m	1152 50	1	Ventilplatta, hål 16,5 mm	Valve disc, hole 16,5 mm	Ventilteller Bohr. 16,5	Clapet, trou 16,5 mm	
"	1153 00	1	Ventilp. 12,5 mm -ser. nr 11007	Valve disc, hole 12,5 mm (old)	Ventilteller Bohr. 12,5 (alt)	Clapet, trou 12,5 mm, ancien	
5n	1163 10	4	Ventilfäder	Valve spring	Ventilfeder	Ressort de clapet	
5o	1164 80	4	Fäste filterrensningcylinder	Bracket	Zylinderkonsole	Support	
5p	6003 30	4	Cylinder C20 50/50	Cylinder	Zylinder C 20 50/50	Verin	
5q	9120 20	4	Gångstång M6x50	Threaded pin	Gewindestift M6 x 50	Tige filetée	
5r	9118 10	4	Mutter M6	Nut	Mutter M6	Ecrou	
5s	6506 40	4	Nylonbricka 1/8	Seal	Dichtring	Joint	
5t	6200 60	4	Ljuddämpare G 1/8	Silencer	Dämpfer G 1/8"	Silencieux	
5u	6501 90	4	Koppling vinkel R 1/8	Nipple	Anschlußnippel G 1/8"	Raccord coudé G 1/8"	
5v	6500 20	/m	Plaströr	Nylon tube	Nylonschlauch	Rylsan	
5x	9128 80	4	Bricka AZ 16.2	Locking washer AZ 16.2	Sicherungsscheibe AZ 16.2	Rondelle de blocage	
6	6102 10	1	Magnetventil kompl. 24VAC	Solenoid valve, compl 24VAC	Magnetventil kompl. 24 VAC	Electrovanne, 24VAC	
"	6102 20	1	Magnetventil kompl. 24VDC	Solenoid valve, compl 24VDC	Magnetventil kompl. 24 VDC	Electrovanne, 24VDC	
6a	6178 80	1	Magnetventil 3/2, 1/8	Valve body, 3/2, 1/8	Ventilkörper 3/2", 1/8"	Corps de la vanne, 3/2, 1/8	
6b	6176 80	1	Magnetspole 24VAC	Coil 24VAC	Magnetspule 24 VAC	Bobinage 24AC	
"	6176 70	1	Magnetspole 24VDC	Coil 24VDC	Magnetspule 24 VDC	Bobinage 24DC	
6c	7201 60	1	Anslutningskontakt	Connector	Anschlußstecker	Connecteur	
6d	9032 60	4	Monteringsbygel	Clamp	Montageklemme	Clip	
"	9108 80	2	Skruv MRX H4x10	Screw	Schraube	Vis	
"	9118 90	2	Låsmutter M4	Locking nut	Mutter M4 selbtsichernd	Ecrou de blocage	
7	6501 10	2	Koppling, rak R 1/8	Nipple, straight	Anschlußnippel	Raccord droit	
8	1165 40	option	Brandlarm komplett	Fire alarm kit	Thermosonde	Kit alerte incendie	
8a	7208 30	1	Kopplingsdosa	Connection box	Verteilerdose	Boite de raccordement	
"	7301 70	2	Skruvkonex	"Konex clip" connector	Anschluß-Klemmen	Clip de raccordement	
"	9108 80	2	Skruv MRX H4x10	Screw	Schraube MRX H4x10	Vis MRX H4 x 10	
"	9118 90	2	Låsmutter M4	Locking nut	Mutter M4 selbtsichernd	Ecrou de blocage	
8b	7301 20	4	Isolerslang	Insulating tube	Isolierschlauch	Gaine isolante	
8c	7200 60	4	Hållare för termosäkkring	Thermal fuse holder	Thermosicherungshalter	Support de sonde thermique	
8d	7502 40	1	Termosäkkring 140 °C	Thermal fuse 140 °C	Thermosicherung 140 °C	Sonde thermique 140°C	
8e	9517 10	2	O-ring 7.1x1.6	O-ring 7.1x1.6 mm	O-Ring 7,1 x 1,6 mm	Rondelle 7.1 x 1.6 mm	
8f	7200 50	4	Skruv M16x1,5 hål 10,25	Screw	Schraube M16 x 1,5	Vis M16 x 1,5	
8g	9117 40	4	Mutter M16x1,5	Nut	Mutter M16 x 1,5	Ecrou M16 x 1,5	
9	1510 10	1	Kopplingshylsa F40-38P	Coupling F40-38P	Adapter F40-38 P	Raccord F40-38P	
10	1602 00	/m	Slang Ø38, 1,5 m	Hose Ø38, 1.5 m	Schlauch Ø38, 1.5 m	Gaine D.38mm, 1.5m	
11	9031 50	1	Slangklämma 44	Hose clip 44	Schlauchschelle 44 mm	Collier 44 mm	