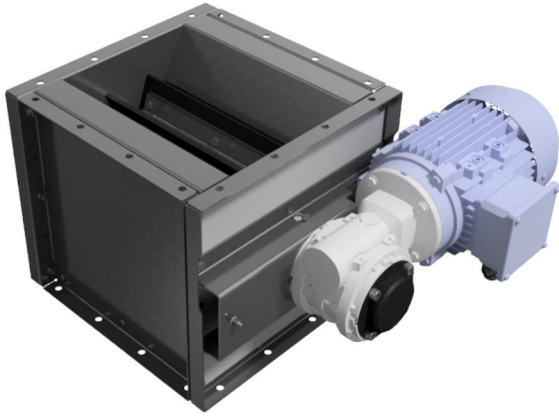


NRS 3, rotary valves

Continuous emptying of the dust collector hopper



NRS3 rotary valve

The rotary valve type NRS3 is used for continuous emptying of material from the dust collector.

The rotary valve can be used for emptying of several non-adhesive material types. Max. particle size for the NRS3 is 3 x 3 x 10 mm (.1 x .4 in.)

| | |
|------------------------------|----------------------|
| Product name | NRS 3, rotary valves |
| Noise level (dB(A)) | <70 |
| Installation | [Indoor], [Outdoor] |
| Material | Heavy steel plate |
| Application | [dust] |
| Operating Temperature | -20 to 40 Deg. C. |



Dust

NRS 3, rotary valves

| Weight (kg) | Power (kW) | [model] |
|-------------|------------|---------|
| 32 | 0,18 | 5502156 |
| 40 | 0,37 | 5505391 |
| 22 | none | 5502337 |

NRS 3, rotary valves

List of Types:

| ID | A | B* | C | D | E [kW] | F** | H [kg] |
|---------|----------|----------------------|--------------------------------|--|--------------------|-----|-----------|
| 5502156 | NRS 3-7 | Rubber ¹⁾ | - | 2,3 m ³ /h | 0,18 | - | 32 |
| 5505391 | NRS 3-MH | | - | 2,3 m ³ /h | 0,37 | - | 40 |
| 5502337 | NRS 3-0 | | Depends on motor ²⁾ | 0,32 m ³ /h per RPM ³⁾ | none ⁴⁾ | - | 22 |

A) Type-Model

B) Blades Material, 1) Rubber

*) Polyurethane blades available only on request.

C) Installation zone exterior of NRSZ, 2) Depends on motor

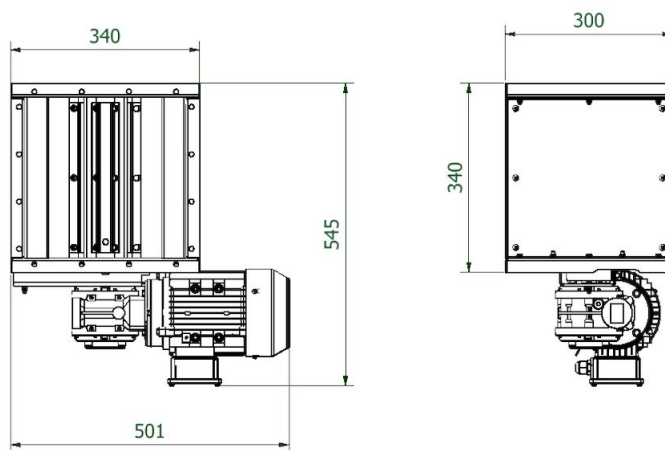
D) Capacity at 100% filling, 3) per RPM

E) Motor, 4) None

F) Motor ATEX Marking

H) Weight

Dimensions NRS 3 / NRSZ 3



Dimensions NRS 3

NRS 3, rotary valves

Dimension inlet NRS 3 / NRSZ 3

