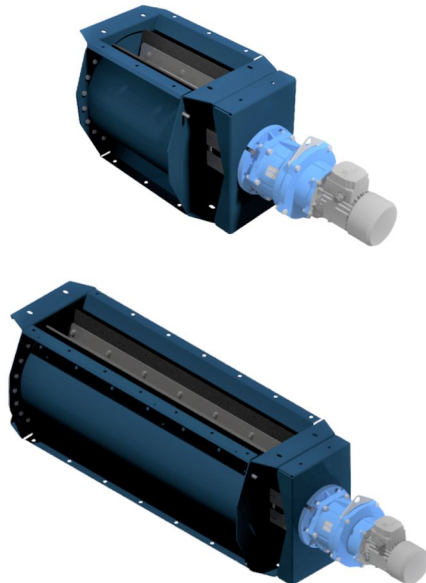


NRS rotary valves, type 4,10,20,30 and 10-Q

Continuous emptying of the dust collector hopper



The NRS type rotary valve is used to transfer material between two separate systems. In pneumatic conveying systems discharge is usually required from the filter or cyclone to the silo, at atmospheric pressure. This is an ideal application for the NRS type rotary valve.

The rotary valve can be used for most material types, though the particle size must not exceed 13 x 13 x 13 mm (.5 x .5 x .5 in).

The NRS type rotary valve is modular and robustly constructed in heavy steel plate. The rotor of each module is equipped with an elastic clutch. This reduces the possibility of damage in use and maximises the life of the unit. The rotor has special rubber seals, which provide an effective air lock between the inlet and the outlet.

| | |
|------------------------------|---|
| Product name | NRS rotary valves, type 4,10,20,30 and 10-Q |
| Noise level (dB(A)) | <70 |
| Installation | [Outdoor], [Indoor] |
| Material | Heavy steel plate |
| Application | [dust] |
| Operating Temperature | -20 to 40 Deg. C. |
| Weight (kg) | 50 |



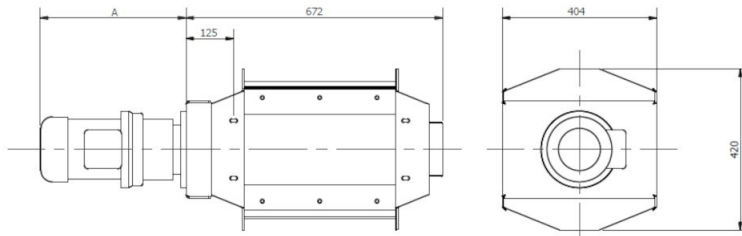
Dust

NRS rotary valves, type 4,10,20,30 and 10-Q

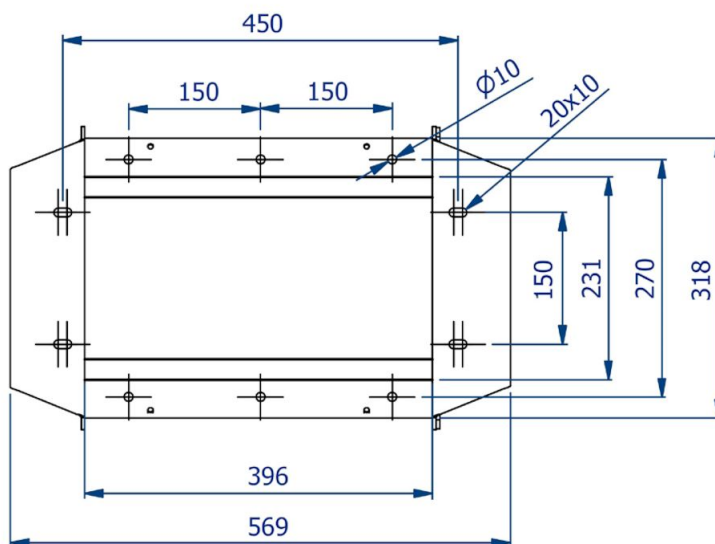
| Power (kW) | [model] |
|------------|----------|
| none | 73005330 |
| 0,18 | 73005331 |
| 0,75 | 73005332 |
| none | 73005338 |
| 0,75 | 73005339 |
| none | 73000553 |
| 0,75 | 73004927 |
| none | 73000554 |

NRS rotary valves, type 4, 10, 20, 30 and 10-Q

Dimensions NRS 4 / NRSZ 4

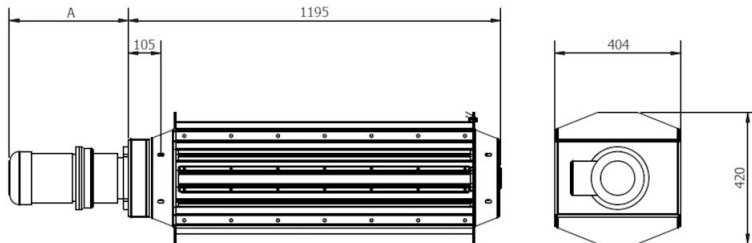


Dimensions inlet NRS 4 / NRSZ 4

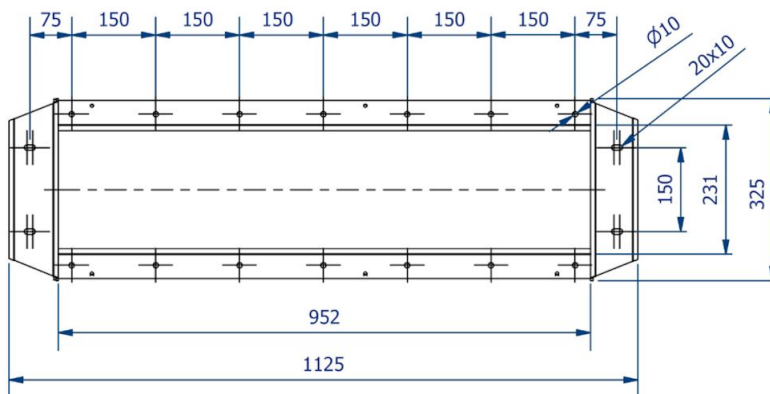


NRS rotary valves, type 4,10,20,30 and 10-Q

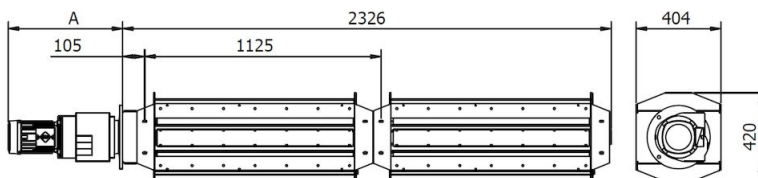
Dimensions NRS 10 / NRSZ 10



Dimensions inlet NRS 10 / NRSZ 10



Dimensions NRS 20 / NRSZ 20



NRS rotary valves, type 4,10,20,30 and 10-Q

Dimensions NRS 30 / NRSZ 30

