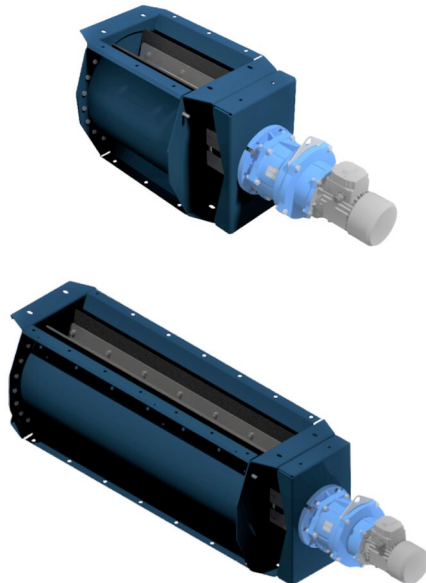


## NRSZ rotorsluser, type 4,10,20,30

Kontinuerlig udtømning fra dit filter



NRSZ rotorsluserne anvendes til at overføre materiale mellem to separate systemer. I pneumatiske transportsystemer kræves der normalt udtømning fra filteret eller cyklon til siloen ved atmosfærisk tryk. Dette er den ideelle applikation for NRSZ rotorsluser.

Rotorsluserne kan anvendes til de fleste materialetyper, dog bør materialestørrelsen ikke overstige 13 x 13 x 13 mm (.5 x .5 x .5 in).

Rotorsluserne type NRSZ er robust udført i kraftigt stålplade. Rotoren er forsynet med specielle gummi-tætninger, som giver en lufttæt sluse.

Denne rotorsluse er certificeret til eksplosivt støv type St1 og St2. NRSZ er en sikkerhedsanordning iht. ATEX definitionen.

Eksplosivt støv type St1 må have Kst op til 200 bar m/s.

Eksplosivt støv type St2 må have Kst op til 300 bar m/s.

Produkt navn	NRSZ rotorsluser, type 4,10,20,30
Lydniveau (dB(A))	< 70
Installation	Udendørs, Indendørs
Materiale	Stålplade
Egnet til eksplosivt støv	True
Applikation	Støv
Driftstemperatur	-20 til 40°C



## NRSZ rotorsluser, type 4,10,20,30

Vægt (kg)	Effekt (kW)	Model
50		73008867*
75	0,18	73008868**
75	0,18	73008870**
75	0,18	73008871**
130	0,18	73008875***
130	0,18	73008877***
130	0,18	73008878***
95		73008874****
135	0,75	73008876****
135		73008879****
135		73008880****
221		73008881*****
243	0,75	73008882*****
243		73008883*****
		73009037
312		73008884*****
338	0,75	73008885*****
		73009038
		73009039

\*Without motor. Capacity at 100% filling - 1,50m<sup>3</sup>/h per RPM

\*\*Capacity at 100% filling - 10 m<sup>3</sup>/h

\*\*\*Capacity at 100% filling - 24 m<sup>3</sup>/h

\*\*\*\*Without motor. Capacity at 100% filling - 3,5 m<sup>3</sup>/h per RPM

\*\*\*\*\*Capacity at 100% filling - 67 m<sup>3</sup>/h

\*\*\*\*\*Without motor. Capacity at 100% filling - 7 m<sup>3</sup>/h per RPM

\*\*\*\*\*Capacity at 100% filling - 134 m<sup>3</sup>/h

\*\*\*\*\*Capacity at 100% filling - 134 m<sup>3</sup>/h

\*\*\*\*\*Without motor. Capacity at 100% filling - 10,5 m<sup>3</sup>/h per RPM

\*\*\*\*\*Capacity at 100% filling - 201 m<sup>3</sup>/h

# NRSZ rotorsluser, type 4,10,20,30

Tilbehør		Artikelnummer
	Rotationsføler for NRS med montagesæt	73008689
	Tool for setting the rotor in NRSZ4/10	73008777

# NRSZ rotorsluser, type 4,10,20,30

ATEX limitations NRSZ 4, 10, 20, 30:

### Atex limitations

Rotary valve type	P <sub>red,max</sub> [kPa]		Rotation speed max. [rpm]
	St1 Kst <sub>max</sub> *=20 MPa·m/s	St2 Kst <sub>max</sub> *=30 MPa·m/s	
NRSZ 4	25	20	20
NRSZ 10	25	20	20
NRSZ 20	25	20	20
NRSZ 30	25	20	20

\*Kst for organic dust.

The combustible dust is described by the parameters:

The limit values of the used class of dust St1: Kst<sub>max</sub>=20 MPa·m/s, MIE ≥13 mJ, MIT ≥430°C (of a dust cloud).

The limit values of the used class of dust St2: Kst<sub>max</sub>=30 MPa·m/s, MIE ≥2 mJ, MIT ≥520°C (of a dust cloud).

### List of Types:

ID	Type model - rpm	Installation zone exterior of NRSZ	Capacity at 100% filling	Motor [kW]	Motor ATEX Marking	Weight [kg]
73008867	NRSZ 4-0	Depends on motor	1,5 m <sup>3</sup> /h per RPM	none	-	50
73008868	NRSZ 4-7	Non-zone	10 m <sup>3</sup> /h	0,18	-	75
73009028	NRSZ 4-20		28 m <sup>3</sup> /h	0,75	-	69
73008874	NRSZ 10-0	Depends on motor	3,5 m <sup>3</sup> /h per RPM	none	-	95
73008875	NRSZ 10-7	Non-zone	24 m <sup>3</sup> /h	0,18	-	130

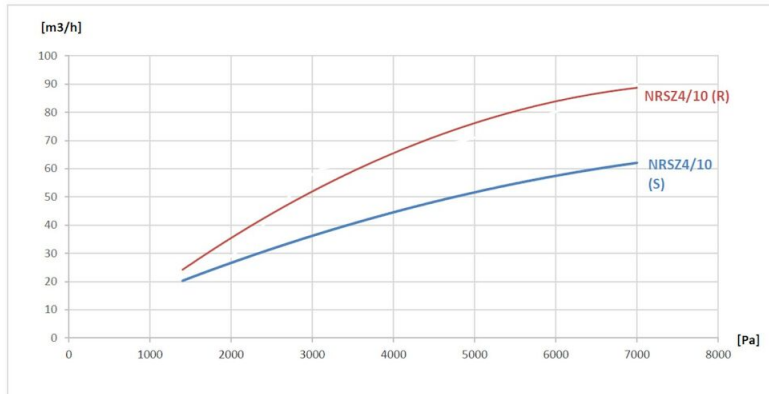
### List of Types:

ID	Type model - rpm	Installation zone exterior of NRSZ	Capacity at 100% filling	Motor [kW]	Motor ATEX Marking	Weight [kg]
73008876	NRSZ 10-20		67 m <sup>3</sup> /h	0,75	-	135
73008881	NRSZ 20-0	Depends on motor	7 m <sup>3</sup> /h per RPM	none	-	221
73008882	NRSZ 20-20	Non-zone	134 m <sup>3</sup> /h	0,75	-	243
73008884	NRSZ 30-0	Depends on motor	10,5 m <sup>3</sup> /h per RPM	none	-	312
73008885	NRSZ 30-20	Non-zone	201 m <sup>3</sup> /h	0,75	-	338
73008870	NRSZ 4-7 Cat 2	Zone 21	10 m <sup>3</sup> /h	0,18	II 2D Ex tb IIIC T135°C Db	75
73008871	NRSZ 4-7 Cat 3	Zone 22			II 3D Ex tc IIIB T125°C Dc	75
73009029	NRSZ 4-20 Cat 2	Zone 21	28 m <sup>3</sup> /h	0,75	II 2D Ex tb IIIC T135°C Db	69
73009030	NRSZ 4-20 Cat 3	Zone 22			II 3D Ex tc IIIB T125°C Dc	69
73008877	NRSZ 10-7 Cat 2	Zone 21	24 m <sup>3</sup> /h	0,18	II 2D Ex tb IIIC T135°C Db	130
73008878	NRSZ 10-7 Cat 3	Zone 22			II 3D Ex tc IIIB T125°C Dc	130
73008879	NRSZ 10-20 Cat 2	Zone 21	67 m <sup>3</sup> /h		II 2D Ex tb IIIC T135°C Db	135
73008880	NRSZ 10-20 Cat 3	Zone 22			II 3D Ex tc IIIB T125°C Dc	135
73008883	NRSZ 20-20 Cat 2	Zone 21	134 m <sup>3</sup> /h		II 2D Ex tb IIIC T135°C Db	243

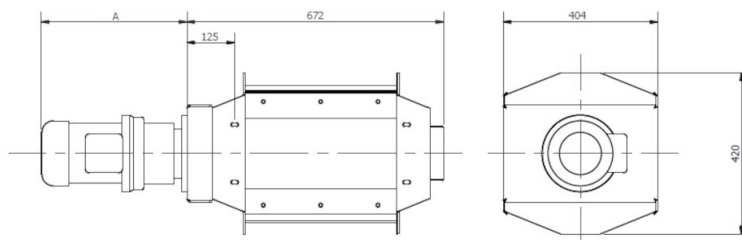
## NRSZ rotorsluser, type 4,10,20,30

### Leakage

The leakage of the rotary valve during shutdown (S) and during operation (R) depends on the pressure drop over the rotor. See the chart:

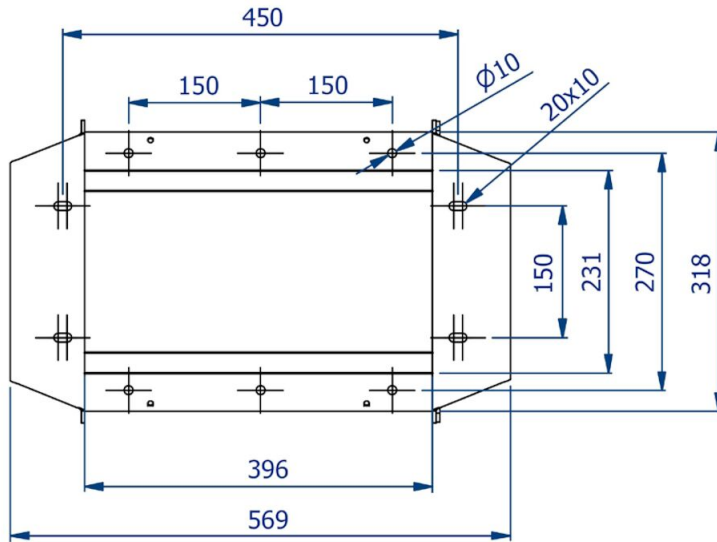


### Dimensions NRS 4 / NRSZ 4

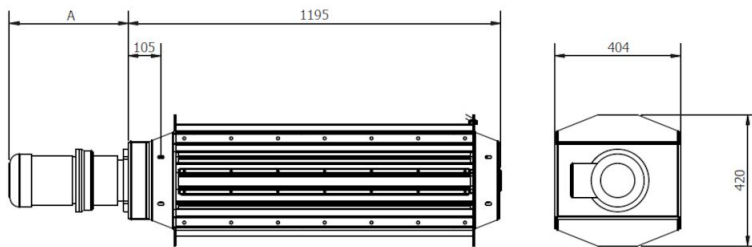


# NRSZ rotorsluser, type 4,10,20,30

Dimensions inlet NRS 4 / NRSZ 4

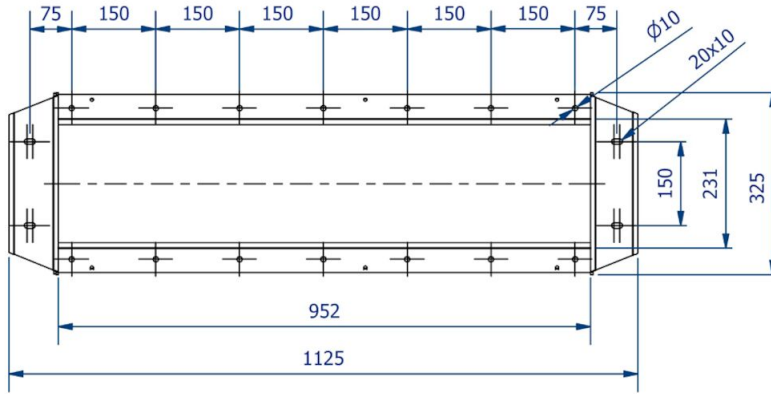


Dimensions NRS 10 / NRSZ 10

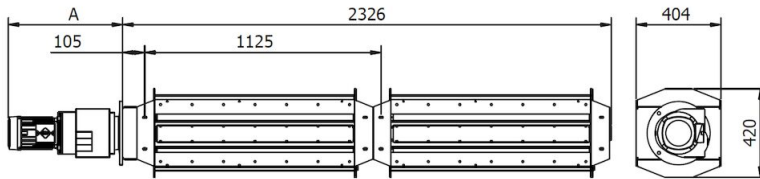


# NRSZ rotorsluser, type 4,10,20,30

Dimensions inlet NRS 10 / NRSZ 10



Dimensions NRS 20 / NRSZ 20



Dimensions NRS 30 / NRSZ 30

