

## Braço extrator de bancada FX2 75 ESD/EX

Solução de melhor custo-benefício para aplicações onde captos compactos, flexíveis e simples sejam necessários.




Os braços Nederman FX2 são feitos de seções leves de alumínio anodizado, com duas ou três juntas ajustáveis de fricção. Oferecendo resistência e durabilidade combinadas com fácil manuseio, elas podem ser usadas em muitos tipos de ambiente. Eles são especialmente adequados para aplicações em que são necessários braços pequenos, flexíveis e fáceis de usar. O braço é projetado para uso em ambientes eletrônicos, onde existe o risco de descargas eletrostáticas. O ESD / EX também pode ser usado para certas aplicações em atmosferas potencialmente explosivas. Recomendado para uso nas zonas 1, 2 e 21, 22.

- Excelente eficiência e baixo nível de ruído garantem um ambiente de trabalho seguro e agradável.
- Suportes para fixação em teto, parede, pisos e bancadas, e os perfis de extensão Cut2fit garantem máxima flexibilidade de instalação.
- As justas externas permitem rotação 360° das seções do braço, garantindo total e exclusiva manobrabilidade.
- O desenho leve, suave e estético permite que os braços se adequem a qualquer ambiente sem comprometer sua durabilidade e confiabilidade.
- Produtos totalmente integrados que economizam tempo e custos, além de prover alta confiabilidade e funcionalidade.

Nome do Produto	Braço extrator de bancada FX2 75 ESD/EX
Nível de ruído (dB(A))	58 dB(A) at 240 m <sup>3</sup> /h
Instalação	Interior
Material	Tubes in anodized aluminium. Joints in conductive PP plastic. Duct connector in conductive EPDM rubber. Minihood in conductive PP plastic.
Temperatura dos fumos	max 70°C
Diâmetro do braço de extração (mm)	75
Caudal (m <sup>3</sup> /h)	110 - 240
Cor	Aluminum and black




















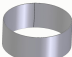
## Braço extrator de bancada FX2 75 ESD/EX

[image]	Descrição	Comprimento do braço (m)	Peso (kg)	[model]
	FX2-ESD/EX-D75-L1100-Up-Low	1,1	3,2	70603944*
	FX2-ESD/EX-D75-L1100-Down-Low	1,1	3,2	70604144**
	FX2-ESD/EX-D75-L1500-Up-Low	1,5	3,4	70604344*
	FX2-ESD/EX-D75-L1500-Down-Low	1,5	3,4	70604544**

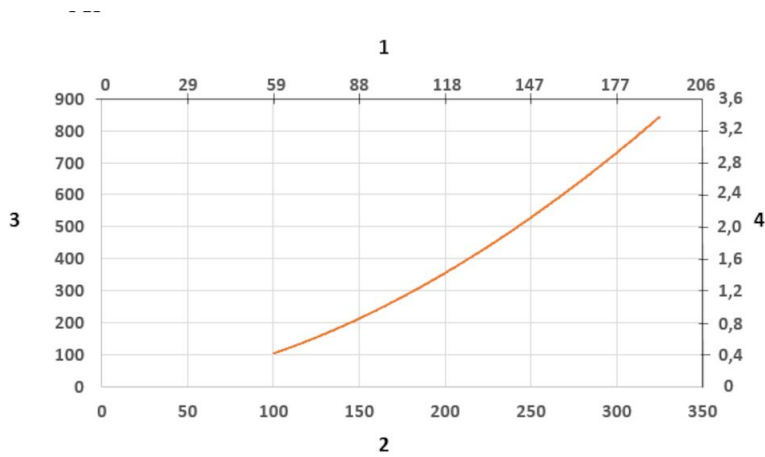
\*Up-Low

\*\*Down-Low

# Braço extrator de bancada FX2 75 ESD/EX

	[accessory]	[partno]
	Suporte FX-Bracket kit-D50/75/100-L190.	70501144
	Suporte FX2-Bracket kit-D50/75/100-L500	70377042
	Suporte FX2-Wall BRKT FLAT-L190-Black.	70377044
	Suporte de bancada FX2 D50/75/100	70501444
	Suporte FX-Classic D50/75/100	70501244
	Extensão FX-Cut2fit L1100.	70501344
	Extensão FX-Cut2fit L2200.	70374600
	Tampa FX-Ceiling cover plate	70502644
	Tampa FX-Ceiling cover plate PLUS	70377045
	Coifa FX-Combi ESD/EX-D50/75/100	70500244
	Coifa FX-Dome ESD/EX-D50/75/100.	70376983
	Coifa FX-Metal ESD/EX-D50/75/100	70500544
	Coifa FX-Flange ESD-D50/75/100	70502944
	Conector FX2-Duct connector-ESD/EX-D75	70377039
	Duto FX2-Al duct-L1000-D75/100toD100	70377058
	Duto FX2-Al duct-L2000-D75/100toD100	70377059
	FX2-Hose support ring-D75	70377067
	FX2-Hose support ring-D100	70377068

## Braço extrator de bancada FX2 75 ESD/EX



Pressure Drop diagram:

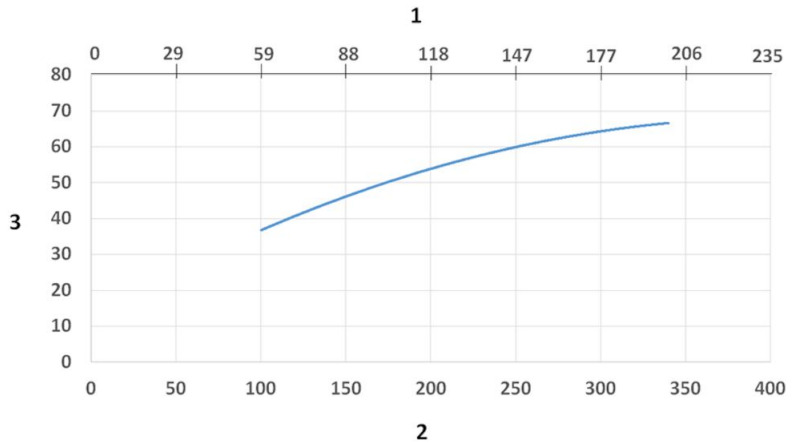
1) X- Axis: Air Flow Rate (cfm)

2) X- Axis: Air Flow Rate (m/h)

3) Y- Axis: Static Pressure Drop (Pa)

4) Y- Axis: Static Pressure Drop (in. wg.)

## Braço extrator de bancada FX2 75 ESD/EX



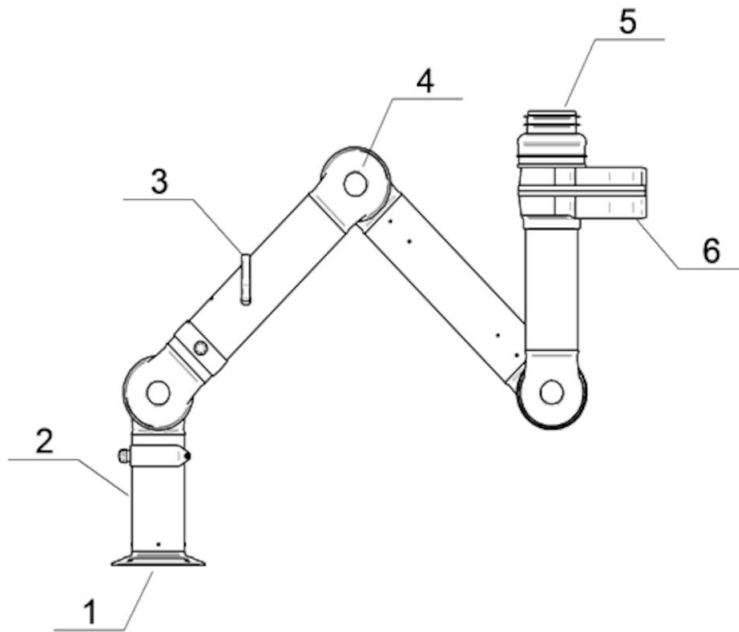
Sound Level diagram:

1) X- Axis: Air Flow Rate (cfm)

2) X- Axis: Air Flow Rate (m/h)

3) Y- Axis: Sound Pressure Level (dB) (A)

## Braço extrator de bancada FX2 75 ESD/EX



Material:

1) Flange: Conductive PP plastic

2) Tubes: Aluminum, anodized 10 µm

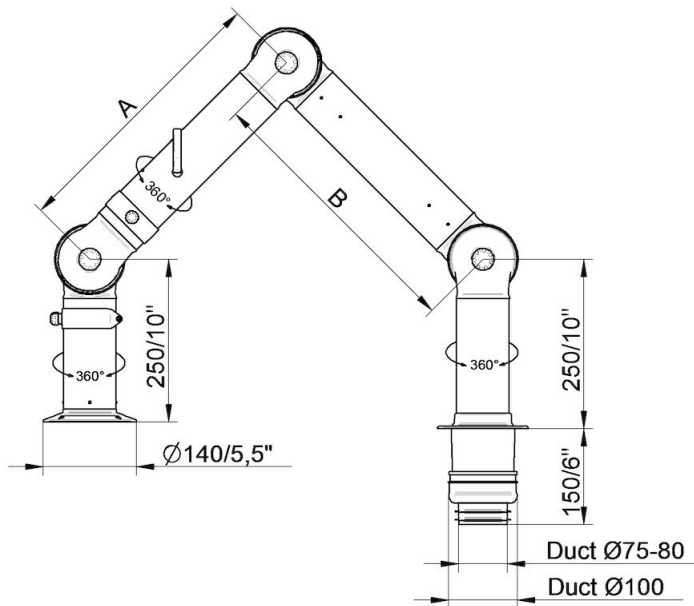
3) Damper adjustment handle: Aluminum: anodized 10 µm  
Internal spring: Stainless steel  
Damper blade: Conductive TP & PP plastic

4) Joints conductive: PP plastic with glass fibre reinforcement  
Plastic rings conductive: PP plastic with glass fibre reinforcement  
Axial locking rings conductive: PP plastic with glass fibre reinforcement  
Adjustment knobs: PA & EDS plastic  
Threaded shaft inside joints: Stainless Steel

5) Duct connector: conductive EPDM Rubber

6) Swivel: Aluminum, conductive powder coating  
Rivets: Aluminum  
Bearings swivel conductive: PP plastic with glass fibre reinforcement

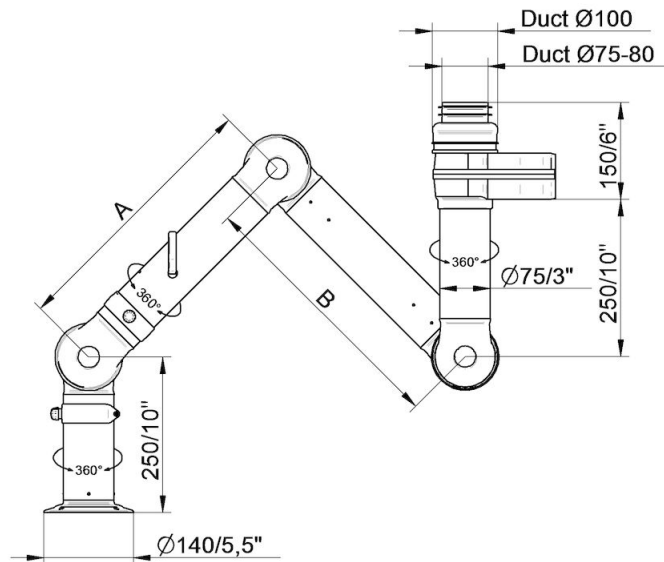
## Braço extrator de bancada FX2 75 ESD/EX



- FX2-ESD/EX-D75-L1100-Down-Through  
Part number: 70604244  
Max. working radius: 1090 mm (42,9 in)  
A: 420 mm (16,5 in)  
B: 420 mm (16,5 in)

- FX2-ESD/EX-D75-L1500-Down-Through  
Part number: 70604644  
Max. working radius: 1450 mm (57,1 in)  
A: 500 mm (19,7 in)  
B: 700 mm (27,5 in)

## Braço extrator de bancada FX2 75 ESD/EX

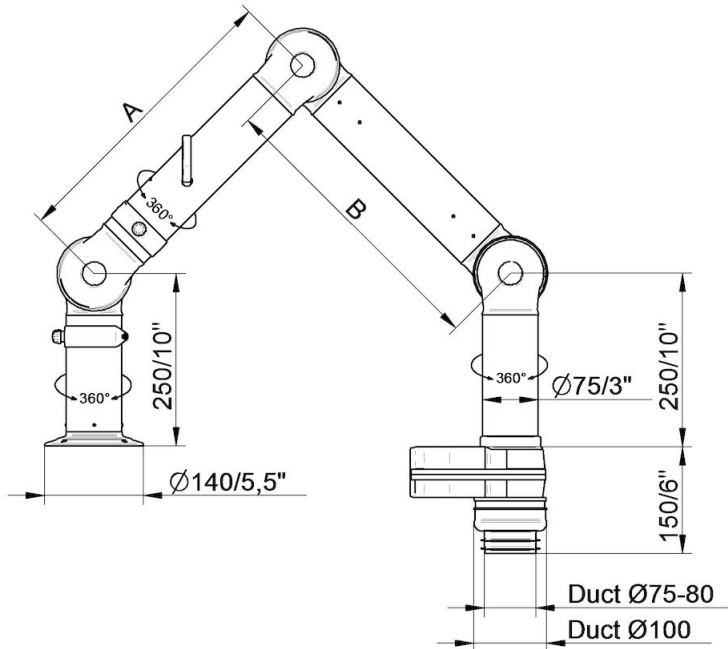


- FX2-ESD/EX-D75-L1100-Up-Low  
Part number: 70603944  
Max. working radius: 1090 mm (42,9 in)  
A: 420 mm (16,5 in)  
B: 420 mm (16,5 in)

- FX2-ESD/EX-D75-L1500-Up-Low  
Part number: 70604344  
Max. working radius: 1450 mm (57,1 in)  
A: 500 mm (19,7 in)  
B: 700 mm (27,5 in)



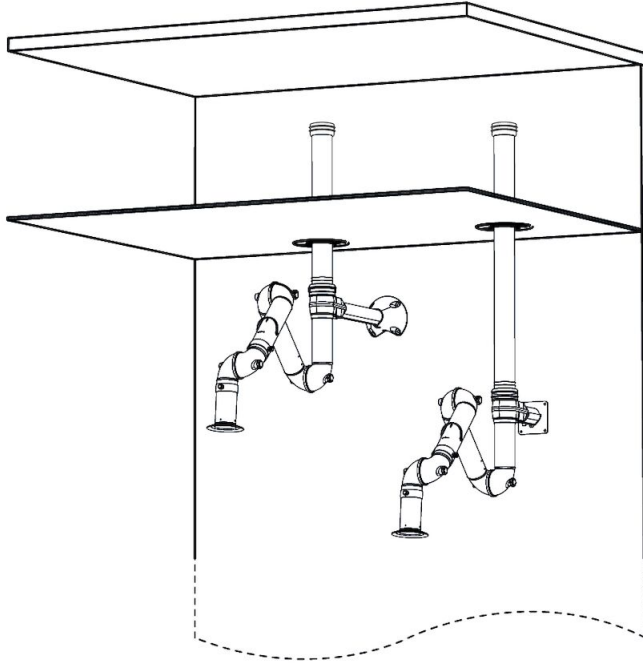
## Braço extrator de bancada FX2 75 ESD/EX



- FX2-ESD/EX-D75-L1100-Down-Low  
Part number: 70604144  
Max. working radius: 1090 mm (42,9 in)  
A: 420 mm (16,5 in)  
B: 420 mm (16,5 in)

- FX2-ESD/EX-D75-L1500-Down-Low  
Part number: 70604544  
Max. working radius: 1450 mm (57,1 in)  
A: 500 mm (19,7 in)  
B: 700 mm (27,5 in)

## Braço extrator de bancada FX2 75 ESD/EX



Wall mounting examples:

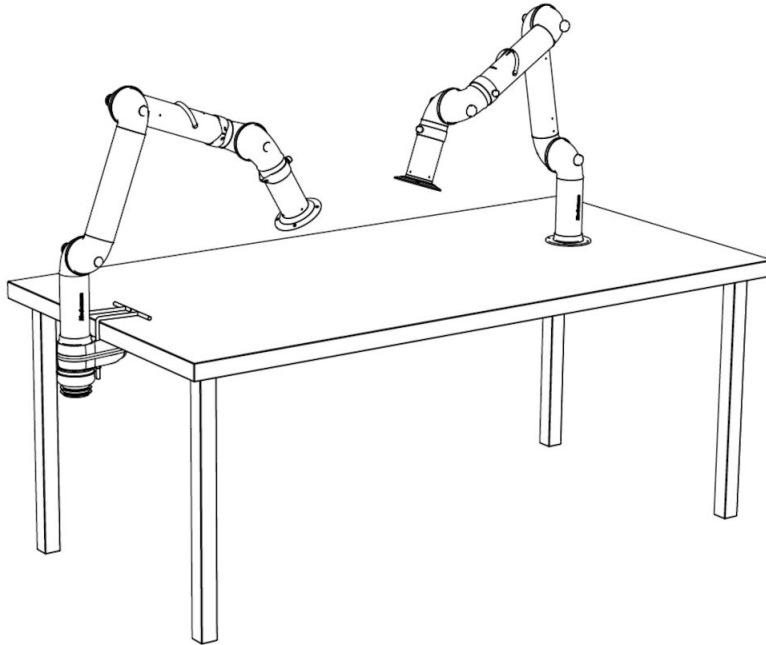
Left: FX2-Up-Low arm with following accessories:

- FX2-Bracket kit-D50/75/100-L500
- FX2-Ceiling cover plate-PLUS
- FX2-Alu duct
- FX2-Duct connector-ESD/EX-D100

Right: FX2-Up-Low arm with following accessories:

- FX2-Wall BRKT kit-Flat-L190-Black
- FX2-Ceiling cover plate-PLUS
- FX2-Alu duct
- FX2-Duct connector-ESD/EX-D100

## Braço extrator de bancada FX2 75 ESD/EX



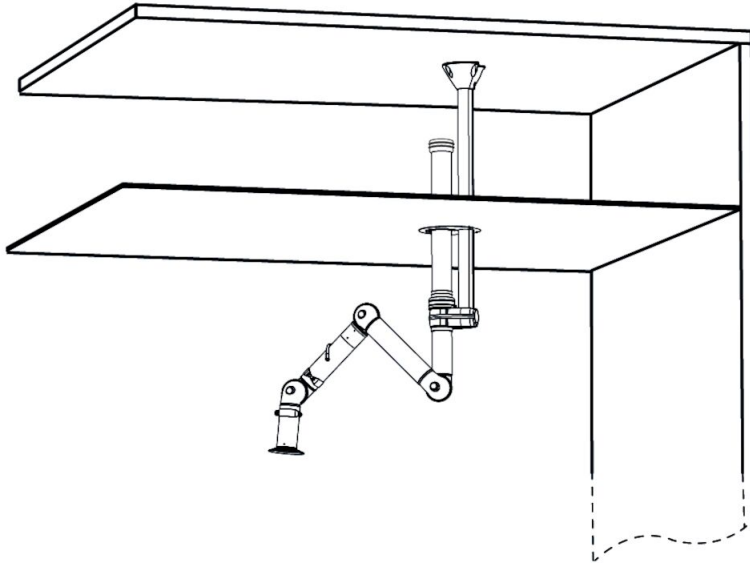
Bench mounting examples:

Left: FX2-Down-Low arm with following accessories:

-FX2-Bench bracket kit-D50/75/100

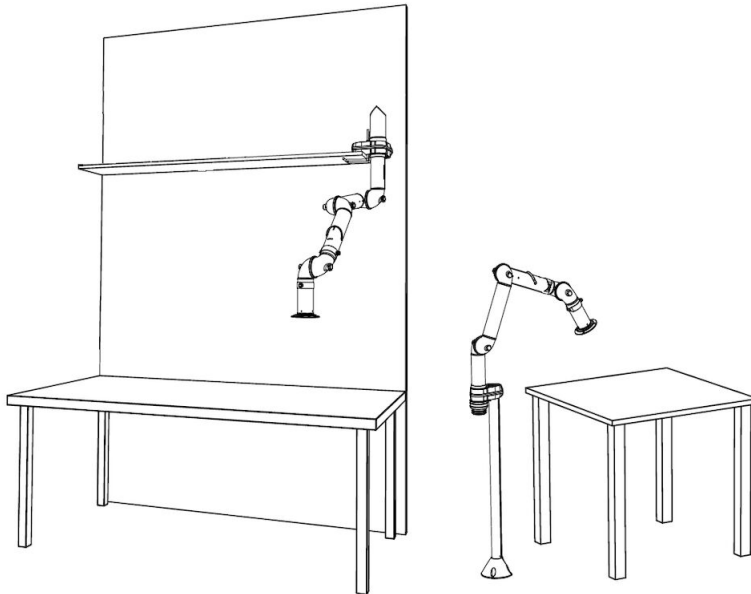
Right: FX2-Down-Through arm

## Braço extrator de bancada FX2 75 ESD/EX



- Ceiling mounting example:  
FX2-Up-Low arm with following accessories:
- FX-Classic bracket
  - FX-Cut2fit extension-L1100
  - FX2-Alu duct
  - FX2-Duct connector-ESD/EX-D100
  - FX-Ceiling cover plate

## Braço extrator de bancada FX2 75 ESD/EX



Other mounting examples:

Left: Shelf mounting with FX2-Up-Low arm and following accessories:

-FX2-Bench bracket kit

Right: Floor mounting with FX2-Up-Low arm and following accessories:

-FX-Classic bracket

-FX-Cut2fit extension-L1100