

Exhaust rail system 920 for stationary vehicles



Easy to handle systems for all types of workshops. Consists of a basic rail system which is completed with an exhaust extraction kit. Very high extraction efficiency. One extraction unit can serve several workbays. Extraction units are easy to move, thanks to light-weight material and ball bearing wheels. Two 400 units serve cars with twin exhaust pipes. Manual disconnection of exhaust nozzles.

For choice of nozzles, see Exhaust nozzles.

Compact, modern design

Easy to position and move by hand

Optional automatic damper for airflow control











Quick and simple installation - less ducting work, reduces cost

- Compact, modern design
- Easy to position and move by hand
- Automatic damper for airflow control
- Quick and simple installation - less ducting work, reduces cost

Product name	Exhaust rail system 920 for stationary vehicles
Installation	[Indoor]
Material	Rail - Aluminium. Sealing lips - EPDM rubber. Trolley - Glassfibre Composite
Operating Temperature	Max 150 °C (300 ° F)
Colour	Grey



Exhaust rail system 920 for stationary vehicles

[image]	Description	Type of hose ¹	Diameter, hose (in)	Hose length (ft)	[model]
	Extraction unit with nozzle storage and damper		4	25	20915220*
	Extraction unit with nozzle storage and damper		4	16	20915120*
	Extraction unit with balancer, damper and hose suspension		4	16	20915620*
	Extraction unit with balancer, damper and hose suspension		4	16	20915520*
	Trolley 1500 extraction unit with balancer, damper and hose suspension		6	16	20914020**
	Trolley 1500 extraction unit with nozzle storage and damper		6	16	20914320**
	Extraction unit 920/400 for Stationary vehicles to be used with a Ø100 hose.				20919320
	Extraction unit 920/400 with balancer for stationary vehicles to be used with a Ø100 hose.				20919220
	Extraction unit 920/1500 without balancer for stationary vehicles to be used with a Ø150 hose.				20919120
	Extraction unit 920/1500 for stationary vehicles to be used with a Ø150 hose.				20919020

*For cars

**For trucks


¹ See table below

Hose type	Specification	Temperature range, °C	Hose fittings in free hose end, distribution hose	Hose fitting on free hose end, inlet hose	Hose connection on reel, distribution hose	Hose connection on reel, inlet hose
NRCP		-40 to +150 Deg. C (Intermittent +170 Deg. C)				
NTP		up to 150				

Exhaust rail system 920 for stationary vehicles

	[accessory]	[partno]
	Exhaust rail 920 L= 2.5 m (8')	20916020*
	Exhaust rail 920 L= 5.0 m (17')	20916120*
	Exhaust rail 920 L= 7.5 m (25')	20916220*
	Exhaust rail 920 L= 10.0 m (33')	20916320*
	Exhaust rail 920 L= 12.5 m (41')	20916420*
	Exhaust rail 920 L= 15.0 m (50')	20916520*
	Exhaust rail 920 L= 17.5 m (57')	20916620*
	Exhaust rail 920 L= 20.0 m (66')	20916720*
	Exhaust rail 920 L= 22.5 m (74')	20916820*
	Exhaust rail 920 L= 25.0 m (82')	20916920*
	Exhaust rail 920 L= 27.5 m (90')	20917020*
	Exhaust rail 920 L= 30.0 m (99')	20917120*
	Exhaust rail 920 L= 32.5 m (106')	20918220*
	Exhaust rail 920 L= 35.0 m (115')	20917220*
	Exhaust rail 920 L= 40.0 m (132')	20917320*
	Exhaust rail 920 L= 45.0 m (148')	20917420*
	Exhaust rail 920 L= 50.0 m (165')	20917520*
	Top outlet Ø200 (8 in) for 920	20374246
	Balancer trolley 920	20374652**
	Balancer with 26 feet cord diam. 5/32 inch, 22 - 30 lb.	20800631**
	Balancer Kit, for 920/400	20373759***
	Shock absorber.	20371698****

Exhaust rail system 920 for stationary vehicles

	[accessory]	[partno]
	Trolley 920/1500 for hose 160 mm (6 1/4"), includes balancer and damper.	20374380
	Trolley 920/1500 for hose 160mm (6 1/4"), with damper, without balancer.	20374379
	Safety coupling ø125 (5")	20374264

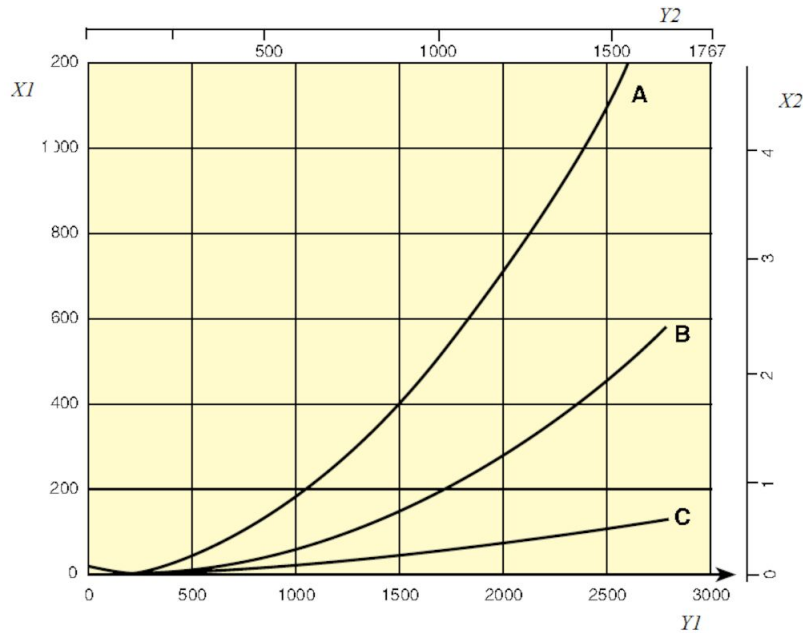
*Complete with suspension parts, joint connectors, rubber seals, end covers and end stops.

**For extra long hose

***For upgrade of 400 extraction unit

****Shock absorber is recommended for rail lengths 20 m / 66 ft or longer

Exhaust rail system 920 for stationary vehicles



Pressure drop 920 Rail

X1 = Pressure, Pa

Y1 = Air flow, m³/h

X2 = Pressure, in. w.g.

Y2 = Airflow, CFM

A = Top connection, Ø200 mm

B = Side connection, Ø160 mm

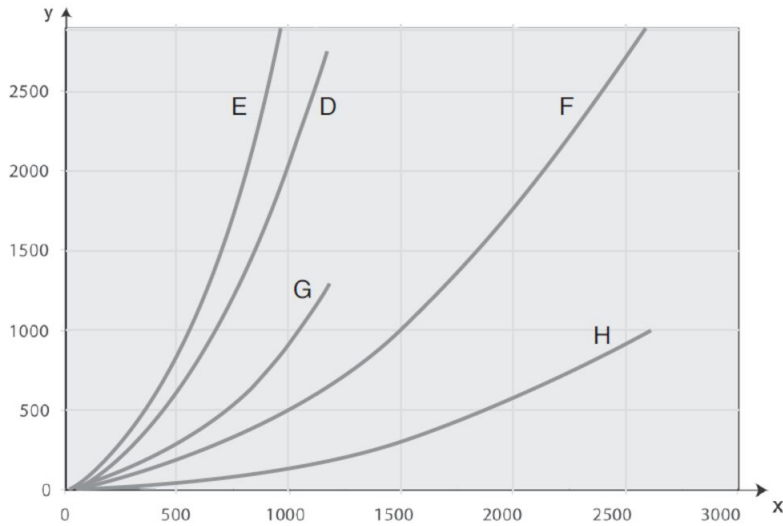
C = Rail 920, per metre (Pa/m)

Airflow recommendations:

Car: 400 - 600 m³/h (235 - 350 cfm)

Truck/Bus: 1000 - 1200 m³/h (590 - 700 cfm)

Exhaust rail system 920 for stationary vehicles



Pressure drop extraction units and trolleys

D = Extraction unit 400, 5 m Ø 100 mm

E = Extraction unit 400, 7.5 m Ø 100 mm

F = Extraction unit 1500, 5 m Ø 150 mm

G = Trolley 400 (without hose)

H = Trolley 1500 (without hose)

Airflow recommendations:

Car: 400 - 600 m³/h (235 - 350 cfm)

Truck /Bus: 1000 - 1200 m³/h (590 - 700 cfm)

Max design airflow / trolley:

Trolley 400: 400 m³/h (235 cfm)

Trolley 1500: 1500 m³/h (885 cfm)