

## NCF-ventilatorer 50 Hz

---


















Nederman NCF ventilatorer har direkte drevmotorer, som giver en sikker og økonomisk drift. Installation af en energieffektiv NCF ventilator sammen med andre produkter fra Nederman sparer tid og reducerer energiomkostningerne. NCF ventilatoren kan anvendes i alle typer industriprocesser og ventilationssystemer, monteret såvel indendørs som udendørs. Ventilatoren er som standard udstyret med vibrationsdæmpere.

---

Produkt navn	NCF-ventilatorer 50 Hz
Beskyttelsesklasse	IP 55
Installation	Udendørs, Indendørs
Materiale	Metalplade, malet grå, RAL 7045
Omgivelsernes temperatur	-30 to +40 °C (22 F to 104 F)
Driftstemperatur	Max. 60 °C
Frekvens (Hz)	50
Faser	3



# NCF-ventilatorer 50 Hz

Billede	Beskrivelse	Spænding (V)	Strøm (A)	Noise level (dB(A))	Vægt (kg)	Effekt (kW)	Model
	Ventilator NCF120/15	230/400	24,0/13,8	85 db(A) at 10000 m <sup>3</sup> /h	123	7,5	14550228
	Ventilator NCF 30/15	230/400	7,9 / 4,6	69 db(A) at 2500 m <sup>3</sup> /h	67	2,2	14550128
	Ventilator NCF30/25	230/400	13,6/7,8	74 db(A) at 4000 m <sup>3</sup> /h	105	4	14550328
	Ventilator NCF40/25	230/400	17,9/10,3	75 db(A) at 4000 m <sup>3</sup> /h	110	5,5	14550428
	Ventilator NCF50/25	230/400	17,9/10,3	78 db(A) at 3500 m <sup>3</sup> /h	112	5,5	14550528
	Ventilator NCF80/20	230/400	24,0/13,8	77 db(A) at 6000 m <sup>3</sup> /h	150	7,5	14550628
	Ventilator NCF120/25	230/400	46,1/26,5	82 db(A) at 8000 m <sup>3</sup> /h	232	15	14550728
	Ventilator NCF160/25	230/400	56,5/32,5	84 db(A) at 10000 m <sup>3</sup> /h	292	18,5	14550828
	Ventilator NCF120/15	400/690	13,8/8,0	85 db(A) at 10000 m <sup>3</sup> /h	123	7,5	14550928
	Ventilator NCF30/25	400/690	7,8/4,5	74 db(A) at 4000 m <sup>3</sup> /h	105	4	14551028
	Ventilator NCF40/25	400/690	10,3/6,0	75 db(A) at 4000 m <sup>3</sup> /h	110	5,5	14551128
	Ventilator NCF50/25	400/690	10,3/6,0	78 db(A) at 3500 m <sup>3</sup> /h	112	5,5	14551228
	Ventilator NCF80/20	400/690	13,8/8,0	77 db(A) at 6000 m <sup>3</sup> /h	150	7,5	14551328
	Ventilator NCF120/25	400/690	26,5/15,3	82 db(A) at 8000 m <sup>3</sup> /h	232	15	14551428
	Ventilator NCF160/25	400/690	32,5/18,8	84 db(A) at 10000 m <sup>3</sup> /h	292	18,5	14551528

# NCF-ventilatorer 50 Hz

Tilbehør		Artikelnummer
	Infløb adap. ø250, NCF 30/15, 40/25, 50/25	14374438
	Infløb adapter ø315, NCF 30/25	14374439
	Infløb adapter ø400, NCF 80/20 og 120/25	14374440
	Infløb adapter ø500, NCF 120/15, 160/25	14374441
	Udløb adap. 288x205 ø315, NCF 30/15, 40/25	14374442
	Udløbsstuds 322x229 ø400, 30/25	14374443
	Udløb adap. 361x256 ø400, NCF 80/20, 120/25	14374444
	Udløb adap. 453x322 ø500, NCF 120/15, 160/25	14374445
	Udløb adap. 256x183 ø250, NCF 50/25, 30/20	14374446
	Flexibel infløb adapter ø250, NCF 30/15, 40/25, 50/25	14374447
	Flexibel infløbsstuds ø315, NCF 30/25	14374448
	Flexibel infløb adapter ø400, NCF 80/20, 120/25	14374449
	Flexibel infløb adapter ø500, NCF 120/15, 160/25	14374450
	Flexibel udløb adapter 288x205 ø315, NCF 30/15, 40/25	14374451
	Flexibelt udløb adapter 322x229 ø400, NCF 30/25	14374452
	Flexibel udløb adapter 361x256 ø400, NCF 80/20, 120/25	14374453
	Flexibel udløb adapter 453x322 ø500, NCF 120/15, 160/25	14374454
	Flexibel udløb adapter 256x183 ø250, NCF 50/25, 30/20	14374455
	Beskyttelsesnet infløb ø250, NCF 30/15, 40/25, 50/25	14374456
	Beskyttelsesnet infløb ø315, NCF 30/25	14374457
	Beskyttelsesnet infløb ø400, NCF 80/20, 120/25	14374458
	Beskyttelsesnet infløb ø500, NCF 120/15, 160/25	14374459

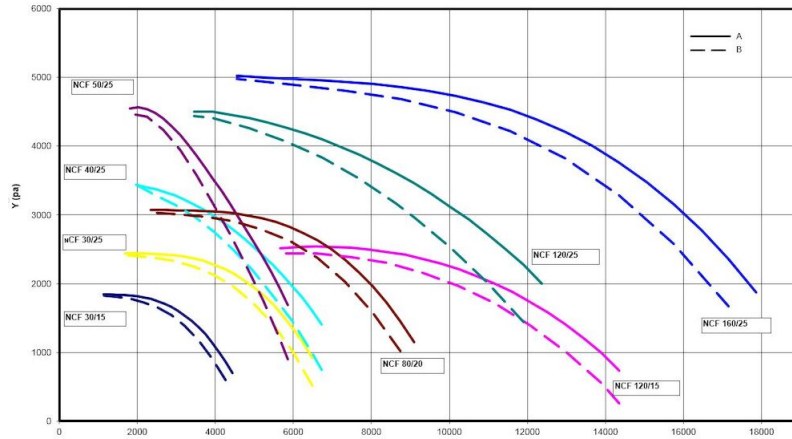
# NCF-ventilatorer 50 Hz

	Tilbehør	Artikelnummer
	Beskyttelsesnet udløb, NCF 30/15, 40/25	14374460
	Beskyttelsesnet udløb, NCF 30/25	14374461
	Beskyttelsesnet udløb, NCF 80/20, 120/25	14374462
	Beskyttelsesnet udløb, NCF 120/15, 160/25	14374463
	Beskyttelsesnet udløb, NCF 50/25	14374464
	Vibrationsdæmper AM 40, 1 sæt	14374624
	Vibrationsdæmper AM 30, 1 sæt	14374628
	Vibrationsdæmper AM 25, 1 sæt	14374629
	Vibrationsdæmper AM 50, 1 sæt	14374630
	Indløbstilslutning ø250, 30/20	14375076
	Ventilatorstarter 5.5kW (2,2 - 5,5 kW motor)	14514837
	Ventilatorstarter 11kW (4,0 - 11,0 kW motor)	14514937
	Ventilatorstarter 18.5kW (15,0 - 18,5 kW motor)	14515037
	Ventilatorstarter 22kW (18,5 - 22,0 kW motor)	14515537
	Fan Inverter for 5,5 kW motor power	14522037*
	Fan Inverter for 7,5 kW motor power	14522137**
	Fan Inverter for 11 kW motor power	14522237**
	Fan Inverter for 15 kW motor power	14522637**
	Fan Inverter for 18,5 kW motor power	14525137**
	Fan Inverter for 22 kW motor power	14525237**

\*Trykmåler 2000 Pa

\*\*Trykmåler 5000 Pa

## NCF-ventilatorer 50 Hz

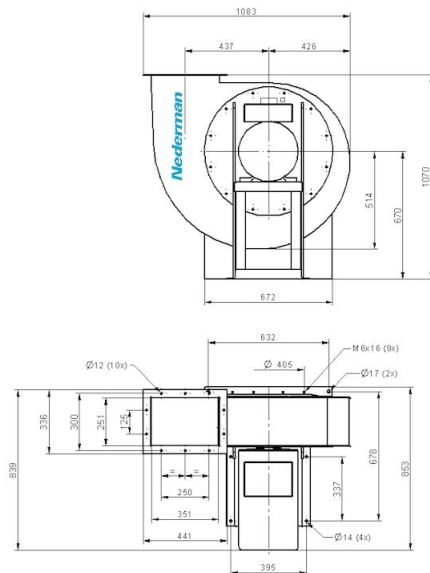


Y = Pressure drop

X = Air flow

A = Total pressure

B = Static pressure

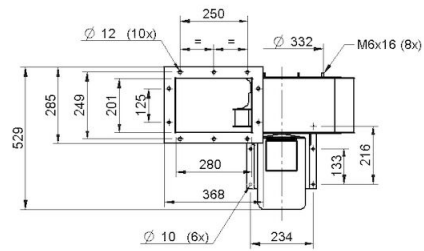
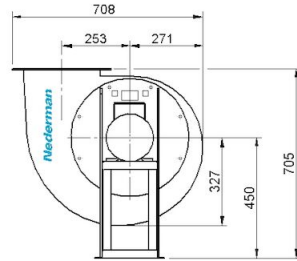


Ventilator NCF 120/25

Indløbsdiameter 400 mm

Udløbsdiameter 400 mm

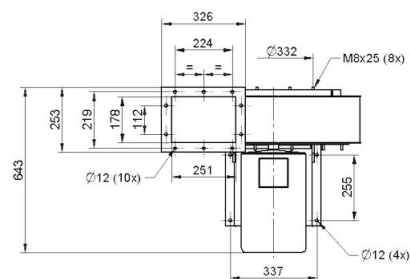
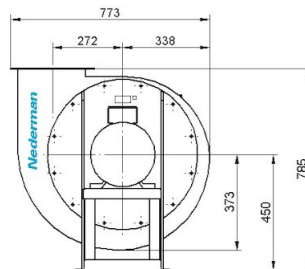
## NCF-ventilatorer 50 Hz



NCF 30/15

Duct inlet diameter 250 mm

Duct outlet diameter 315 mm

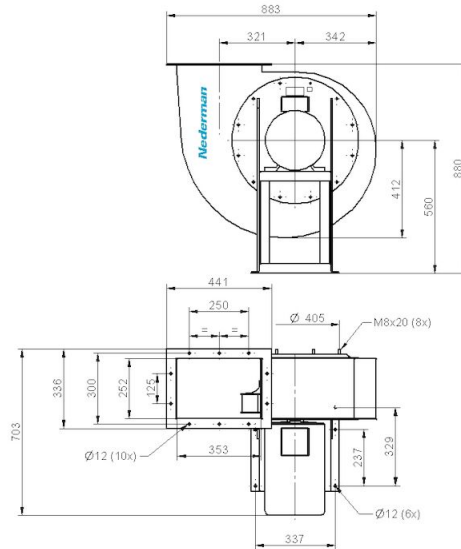


NCF 50/25

Duct inlet diameter 250 mm

Duct outlet diameter 250 mm

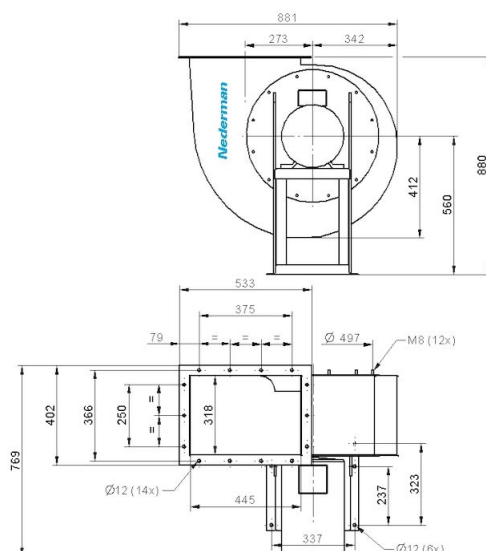
## NCF-ventilatorer 50 Hz



NCF 80/20

Duct inlet diameter 400 mm

Duct outlet diameter 400 mm

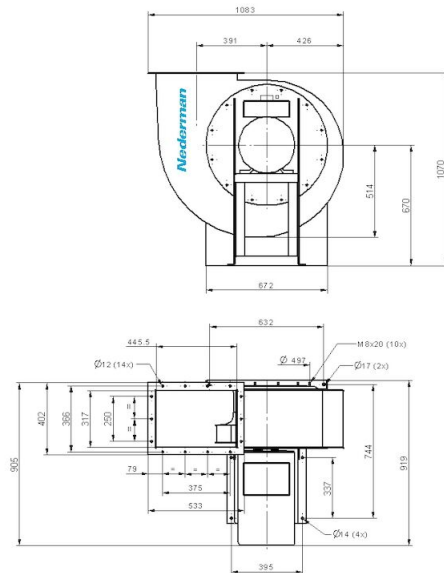


NCF 120/15

Duct inlet diameter 500 mm

Duct outlet diameter 500 mm

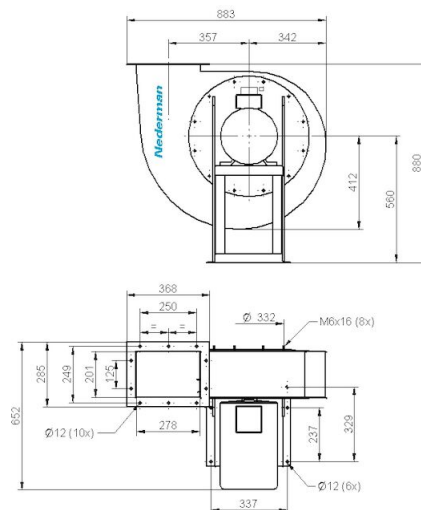
## NCF-ventilatorer 50 Hz



NCF 160/25

Duct inlet diameter 500 mm

Duct outlet diameter 500 mm



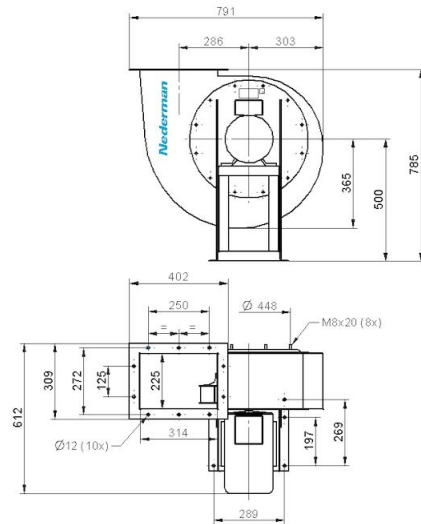
NCF 40/25

Duct inlet diameter 250 mm

Duct outlet diameter 315 mm



## NCF-ventilatorer 50 Hz



NCF 30/25

Duct inlet diameter 315 mm

Duct outlet diameter 400 mm