

NCF fans 50 Hz


















The Nederman NCF Fans have direct drive motors which means a safe and cost effective operation. Installing an energy efficient NCF fan with our other Nederman products saves time and reduces energy costs. It is a centrifugal fan designed for use in all types of industrial process and ventilation systems, mounted indoor as well as outdoor. The fan is equipped with vibration absorbers as standard.

| | |
|----------------------------------|-------------------------------------|
| Product name | NCF fans 50 Hz |
| Protection class | IP 55 |
| Installation | [Outdoor], [Indoor] |
| Material | Sheet metal, painted grey, RAL 7045 |
| Ambient temperature range | -30 to +40 °C (22 F to 104 F) |
| Operating Temperature | Max. 60 °C |
| Frequency (Hz) | 50 |
| No of phases | 3 |



NCF fans 50 Hz

| [Image] | Description | Power Voltage (V) | Amperage (A) | Noise level (dB(A)) | Weight (kg) | Power (kW) | [model] |
|---|---------------|-------------------|--------------|------------------------|-------------|------------|----------|
|  | FAN NCF30/15 | 230/400 | 7,9 / 4,6 | 69 db(A) at 2500 m³/h | 67 | 2,2 | 14550128 |
|  | FAN NCF120/15 | 230/400 | 24,0/13,8 | 85 db(A) at 10000 m³/h | 123 | 7,5 | 14550228 |
|  | FAN NCF30/25 | 230/400 | 13,6/7,8 | 74 db(A) at 4000 m³/h | 105 | 4 | 14550328 |
|  | FAN NCF40/25 | 230/400 | 17,9/10,3 | 75 db(A) at 4000 m³/h | 110 | 5,5 | 14550428 |
|  | FAN NCF50/25 | 230/400 | 17,9/10,3 | 78 db(A) at 3500 m³/h | 112 | 5,5 | 14550528 |
|  | FAN NCF80/20 | 230/400 | 24,0/13,8 | 77 db(A) at 6000 m³/h | 150 | 7,5 | 14550628 |
|  | FAN NCF120/25 | 230/400 | 46,1/26,5 | 82 db(A) at 8000 m³/h | 232 | 15 | 14550728 |
|  | FAN NCF160/25 | 230/400 | 56,5/32,5 | 84 db(A) at 10000 m³/h | 292 | 18,5 | 14550828 |
|  | FAN NCF120/15 | 400/690 | 13,8/8,0 | 85 db(A) at 10000 m³/h | 123 | 7,5 | 14550928 |
|  | FAN NCF30/25 | 400/690 | 7,8/4,5 | 74 db(A) at 4000 m³/h | 105 | 4 | 14551028 |
|  | FAN NCF40/25 | 400/690 | 10,3/6,0 | 75 db(A) at 4000 m³/h | 110 | 5,5 | 14551128 |
|  | FAN NCF50/25 | 400/690 | 10,3/6,0 | 78 db(A) at 3500 m³/h | 112 | 5,5 | 14551228 |
|  | FAN NCF80/20 | 400/690 | 13,8/8,0 | 77 db(A) at 6000 m³/h | 150 | 7,5 | 14551328 |
|  | FAN NCF120/25 | 400/690 | 26,5/15,3 | 82 db(A) at 8000 m³/h | 232 | 15 | 14551428 |
|  | FAN NCF160/25 | 400/690 | 32,5/18,8 | 84 db(A) at 10000 m³/h | 292 | 18,5 | 14551528 |

NCF fans 50 Hz

| | [accessory] | [partno] |
|---|-------------------------------------|----------|
|  | Inlet adap. d250,30/15,40/25,50/25 | 14374438 |
|  | Inlet adapter d315, 30/25 | 14374439 |
|  | Inlet adapter d400, 80/20, 120/25 | 14374440 |
|  | Inlet adapter d500, 120/15, 160/25 | 14374441 |
|  | Outl. adap.288x205 d315,30/15,40/25 | 14374442 |
|  | Outlet adapter 322x229 d400, 30/25 | 14374443 |
|  | Outl.adap.361x256 d400,80/20,120/25 | 14374444 |
|  | Outl.adap.453x322d500,120/15,160/25 | 14374445 |
|  | Outl.adap.256x183 d250, 50/25,30/20 | 14374446 |
|  | Flex.inl.ad..d250,30/15,40/25,50/25 | 14374447 |
|  | Flexible inlet adapter d315, 30/25 | 14374448 |
|  | Flex.inlet.adap.d400, 80/20, 120/25 | 14374449 |
|  | Flex.inlet.adap.d500,120/15,160/25 | 14374450 |
| | Flex.out.a.288x205 d315,30/15,40/25 | 14374451 |
| | Flex.outlet adap.322x229 d400,30/25 | 14374452 |
| | Flex.out.a.361x256d400,80/20,120/25 | 14374453 |
| | Flex.ou.a.453x322d500,120/15,160/25 | 14374454 |
| | Flex.ou.a.256x183 d250, 50/25,30/20 | 14374455 |
|  | Inl.guardnet d315,30/15,40/25,50/25 | 14374456 |
|  | Inlet guard net d315, 30/25 | 14374457 |
|  | Inlet guard net d400, 80/20, 120/25 | 14374458 |
|  | Inlet guard net d500,120/15,160/25 | 14374459 |

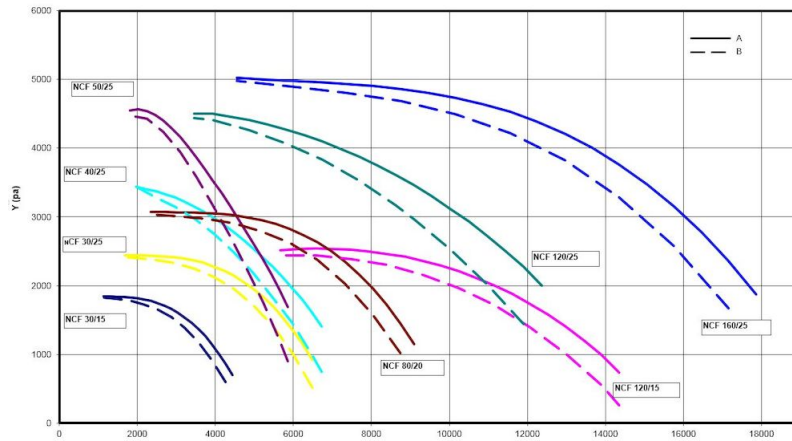
NCF fans 50 Hz

| | [accessory] | [partno] |
|---|---|------------|
|  | Outlet guard net, 30/15, 40/25 | 14374460 |
|  | Outlet guard net, 30/25 | 14374461 |
|  | Outlet guard net, 80/20, 120/25 | 14374462 |
|  | Outlet guard net, 120/15, 160/25 | 14374463 |
|  | Outlet guard net, 50/25 | 14374464 |
| | Vibration absorber AM 40, 1 set | 14374624 |
|  | Vibration absorber AM 30, 1 set | 14374628 |
| | Vibration absorber AM 25, 1 set | 14374629 |
|  | Vibration absorber AM 50, 1 set | 14374630 |
|  | Inlet adapter d250, 30/20 | 14375076 |
|  | Fan starter 5.5kW (2,2 - 5,5 kW motor power) | 14514837 |
|  | Fan starter 11kW (4,0 - 11,0 kW motor power) | 14514937 |
|  | Fan starter 18.5kW (15,0 - 18,5 kW motor power) | 14515037 |
|  | Fan starter 22kW (18,5 - 22,0 kW motor power) | 14515537 |
| | Fan Inverter for 5,5 kW motor power | 14522037* |
| | Fan Inverter for 7,5 kW motor power | 14522137** |
| | Fan Inverter for 11 kW motor power | 14522237** |
| | Fan Inverter for 15 kW motor power | 14522637** |
| | Fan Inverter for 18,5 kW motor power | 14525137** |
| | Fan Inverter for 22 kW motor power | 14525237** |

*Pressure sensor 2000 Pa

**Pressure sensor 5000 Pa

NCF fans 50 Hz

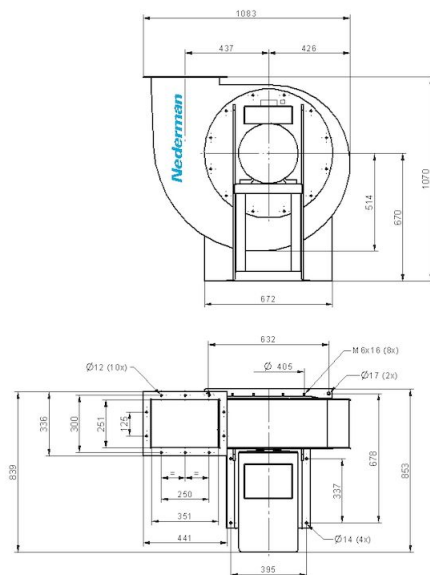


Y = Pressure drop

X = Air flow

A = Total pressure

B = Static pressure

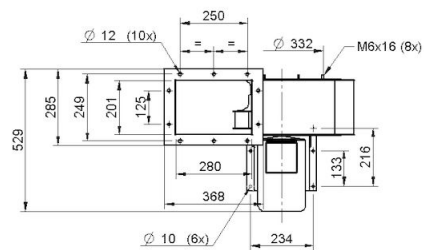
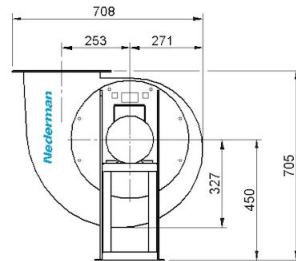


Fan NCF 120/25

Duct inlet diameter 400 mm

Duct outlet diameter 400 mm

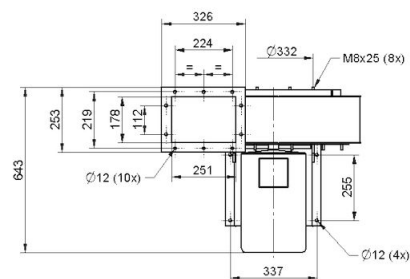
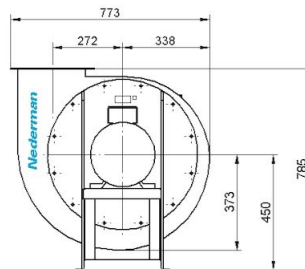
NCF fans 50 Hz



NCF 30/15

Duct inlet diameter 250 mm

Duct outlet diameter 315 mm

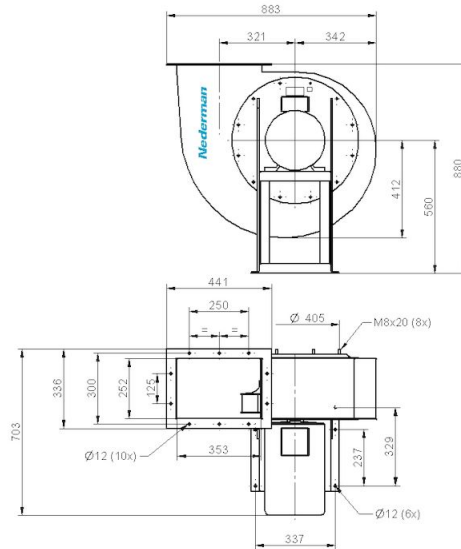


NCF 50/25

Duct inlet diameter 250 mm

Duct outlet diameter 250 mm

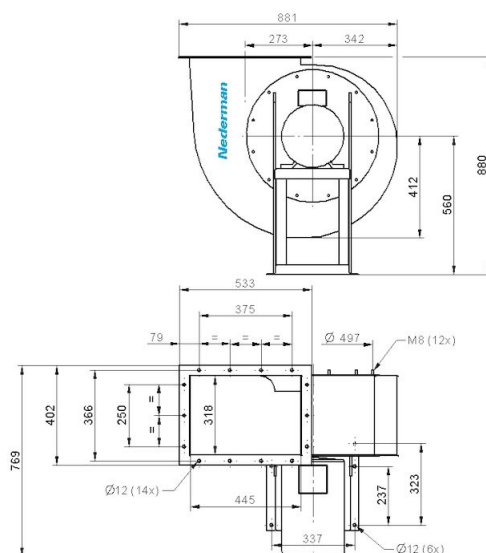
NCF fans 50 Hz



NCF 80/20

Duct inlet diameter 400 mm

Duct outlet diameter 400 mm

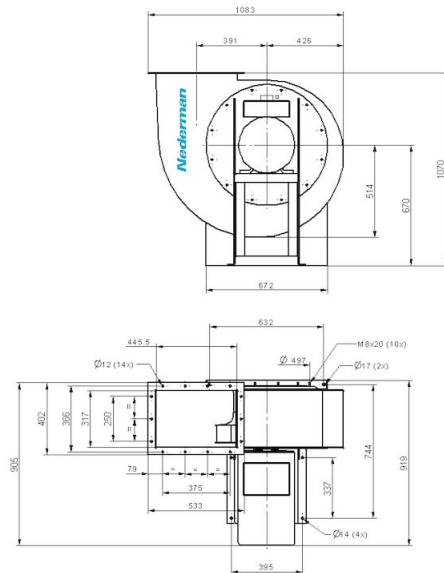


NCF 120/15

Duct inlet diameter 500 mm

Duct outlet diameter 500 mm

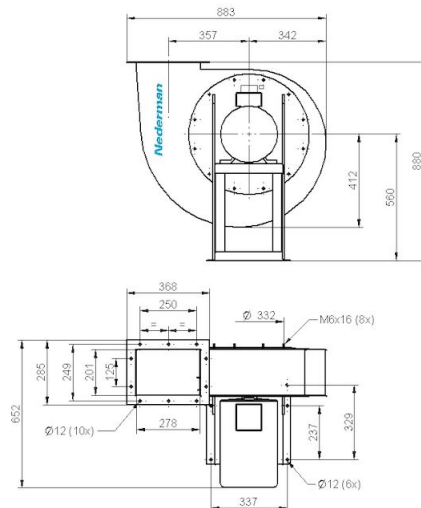
NCF fans 50 Hz



NCF 160/25

Duct inlet diameter 500 mm

Duct outlet diameter 500 mm

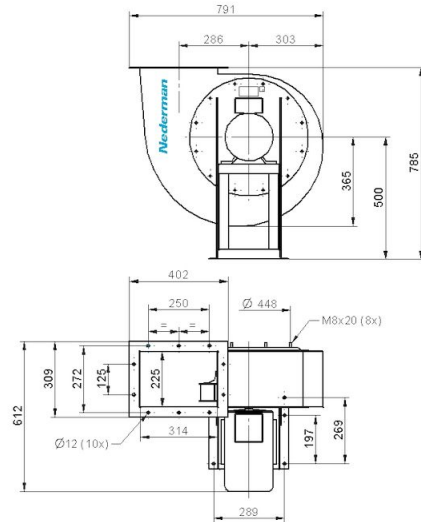


NCF 40/25

Duct inlet diameter 250 mm

Duct outlet diameter 315 mm

NCF fans 50 Hz



NCF 30/25

Duct inlet diameter 315 mm

Duct outlet diameter 400 mm