

OMF 2x4000 SM

FibreDrain® oil mist collector for continuous operation.



Nederman FibreDrain® OMF oil mist collectors are designed to handle large amounts of emulsion mist during continuous operation. They are developed with focus on high efficient filtration together with low maintenance cost.



Nederman FibreDrain® OMF 2x4000 has as standard 3 filter-stages where the first 2 stages consists of filter cassettes with Nederman's FibreDrain® technology. Nederman have a wide range of different types of filters to suit many different kind of applications. The third stage consists of a HEPA filter in filter class H13 with an efficiency of 99,95% for MPPS according to EN1822. All tower built Nederman FibreDrain® OMF units are prepared for use of pre filter. OMF 2x4000 have a top mounted radial fan.

- Three filter stages, optional pre-filter
- Gauges for reading of pressure drop over each filter stage
- Drain: 4 off 1 1/2"
- Non-vibration fan suspension system

Наименование товара	OMF 2x4000 SM
Стандарт	2009/125/EC
Объем (для перевозки) (м³)	10.6
Уровень шума (дБ(А))	<70 dB(A) @1,5 m from service side with optional fan enclosure and silencer
Класс защиты	IP55
Эффективность фильтрации (%)	99,95
Установка	Снаружи помещения
Материал	Sheet metal, painted both in- and outside.
Метод очистки фильтра	[Draining]
Рабочее давление (кПа)	Max 4500 Pa
Производительность (макс. воздушный поток м³/час)	8000
Рабочая температура	60 deg C (ilimited by filter)
Напряжение (В)	400/690
Частота (Гц)	50
Количество фаз	3
Количество фильтроэлементов	12
Сила тока (А)	19,5 / 11,3
Цвет	NCS-S 1005 B20G
Вес (кг)	1140
Мощность (кВт)	11
Пояснение к техническим данным	Plus 4 optional filter elements.



OMF 2x4000 SM

[image]	Название листа технических данных	[model]
	OMF 2x4000, Inlet flange 450x450mm left. Drain 4 x 1 1/2" Female.	12401151*
	OMF 2x4000, Inlet flange 450x450mm right. Drain 4 x 1 1/2" Female.	12401152*

*Plus 4 optional filter elements.

OMF 2x4000 SM

	[accessory]	[partno]
	Drain pump box, 50 Hz, 10 litre/min at 5m, including controller	12400054*
	Drain container with piping	12400764**
	Optional FibreDrain Pre Filter ORF 610x610x96 mm.	12400039
	FibreDrain Filter 1 OMF; 600x600x292 mm	12400009
	FibreDrain Filter 2 OMF; 600x600x292 mm	12400010
	HEPA Filter H13; 610x610x292 mm	12400012
	Inlet adapter OSF 4x2000, OMF 2x4000	12401161
	Extension structure OSF 2x2000, OMF 2x4000	12401164
	Fan enclosure 2 filters in depth	12401109
	Silencer 90° Ø 500 mm	12400038
	Drain pump box, 50 Hz, 10 litre/min at 10m, including controller	12401330
	OSF/OMF Instruction manual for mounting system for electric components	12401342
	OMF/OSF/MQL mounting system for electrical components	12401341
	Frequency inverter with 5kPa pressure sensor. 11kW	73008918
	Frequency inverter with 5kPa pressure sensor. 15kW	73008919

*Drain connection must be elevated min 200 mm from pump box support level

**Drain connection must be elevated min 420mm from container support level

OMF 2x4000 SM

OMF 2x4000 assembly of options:



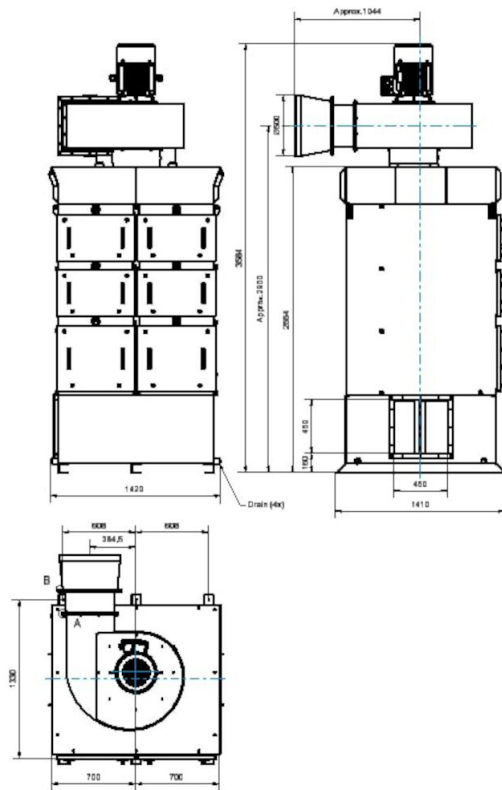
OMF 2x4000 SM

OMF 2x4000 complete with options:



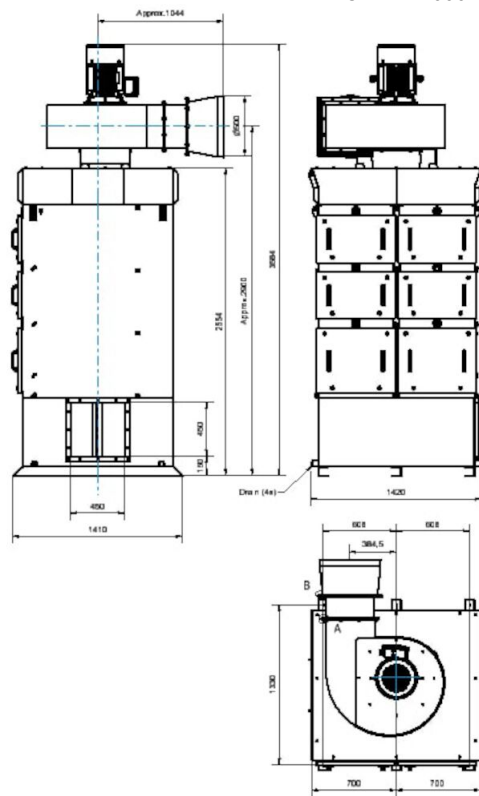
OMF 2x4000 SM

OMF 2x4000 with inlet from left side:



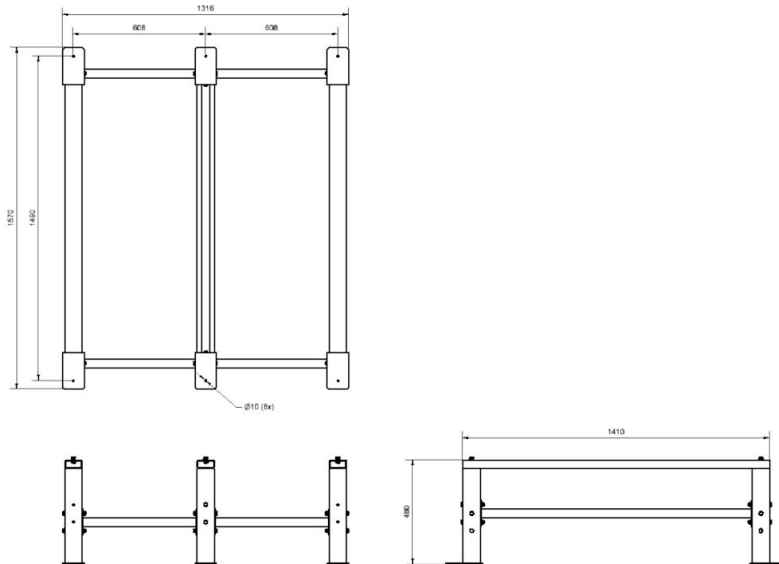
OMF 2x4000 SM

OMF 2x4000 with inlet from right side:

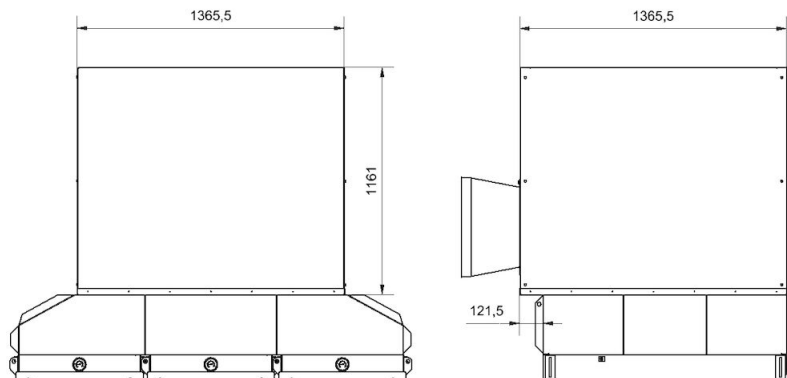


OMF 2x4000 SM

Dimension Extension Structure OSF2x2000_OMF2x4000,
accessory 12401164:



Dimension Fan Enclosure_OSF2x2000_3x2000_4x2000_5x200_OMF2x4000_4x4000,
accessory 12401109:



OMF 2x4000 SM

Dimension Inlet Adapter OSF4x2000_OMF2x4000,
accessory 12401161:

