

## OSF 2x2000 SM

FibreDrain® oil smoke collector for continuous operation.



Nederman OSF oil smoke collectors are designed to handle large amounts of neat oil mist during continuous operation. They are developed with focus on high efficient filtration together with low maintenance cost.



Nederman OSF 2x2000 has as standard 3 filter-stages where the first 2 stages consists of filter cassettes with Nederman's FibreDrain® technology. Nederman have a wide range of different types of filters to suit many different kind of applications. The third stage consists of a HEPA filter in filter class H13 with an efficiency of 99,95% for MPPS according to EN1822. All tower built Nederman OSF units are prepared for use of pre filter. OSF 2x2000 have a top mounted radial fan.

- Three filter stages, optional pre-filter
- Gauges for reading of pressure drop over each filter stage
- Drain: 4 off 1 1/2"
- Non-vibration fan suspension system

Product name	OSF 2x2000 SM
Standard	2009/125/EC
Volume (for shipping) (m³)	10.6
Noise level (dB(A))	<70 dB(A) @1,5 m from service side with optional fan enclosure and silencer
Protection class	IP55
Filter efficiency (%)	99,95
Installation	[Indoor]
Material	Sheet metal, painted both in- and outside.
Filter cleaning method	[Draining]
Working pressure (kPa)	Max 3700 Pa
Capacity (max airflow m3/h)	4000
Operating Temperature	60 deg C (limited by filter)
Power Voltage (V)	400/690
Frequency (Hz)	50
No of phases	3
Number of filter elements	12
Amperage (A)	13 / 7,5
Colour	NCS-S 1005 B20G
Weight (kg)	1115
Power (kW)	7,5
Note	Plus 4 optinal filter element.



## OSF 2x2000 SM

[image]	Description	[model]
	OSF 2x2000, Inlet flange 350x350mm left. Drain 4 x 1 1/2" Female.	12401141*
	OSF 2x2000, Inlet flange 350x350mm right. Drain 4 x 1 1/2" Female.	12401142*

\*Plus 4 optimal filter element.

## OSF 2x2000 SM

	[accessory]	[partno]
	Drain pump box, 50 Hz, 10 litre/min at 5m, including controller	12400054*
	Drain container with piping	12400764**
	Optional FibreDrain Pre Filter ORF 610x610x96 mm.	12400039
	FibreDrain Filter 1 OSF; 600x600x292 mm	12400006
	FibreDrain Filter 2 OSF; 600x600x292 mm	12400007
	Inlet adapter OSF 2x2000	12401157
	Extension structure OSF 2x2000, OMF 2x4000	12401164
	Fan enclosure 2 filters in depth	12401109
	Silencer 90° Ø 400 mm	12401158
	Frequency Inverter 7,5 kW incl transmitter 0 - 2 kPa	12400822
	Drain pump box, 50 Hz, 10 litre/min at 10m, including controller	12401330
	OMF/OSF/MQL mounting system for electrical components	12401341

\*Drain connection must be elevated min 200 mm from pump box support level

\*\*Drain connection must be elevated min 420mm from container support level

## OSF 2x2000 SM

OSF 2x2000 assembly of options:



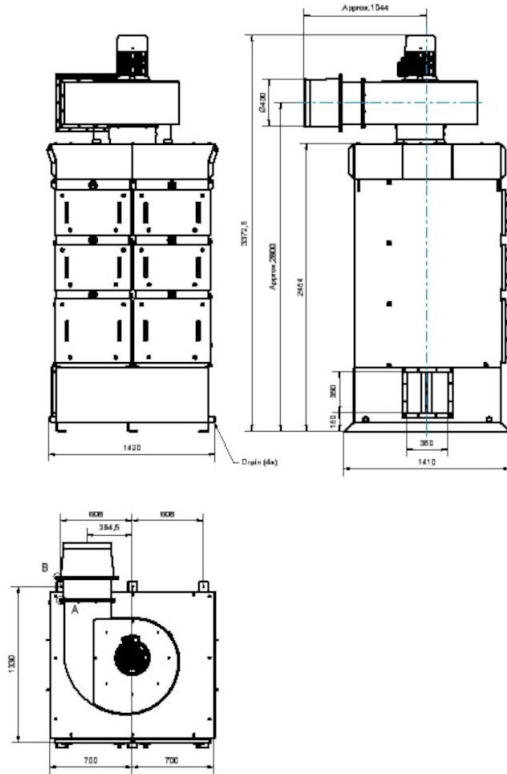
# OSF 2x2000 SM

OSF 2x2000 complete with options:



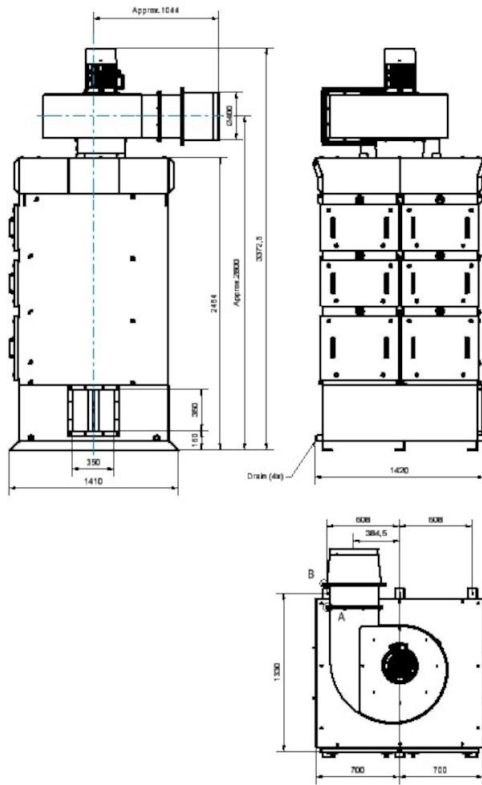
## OSF 2x2000 SM

OSF 2x2000 with inlet from left side:



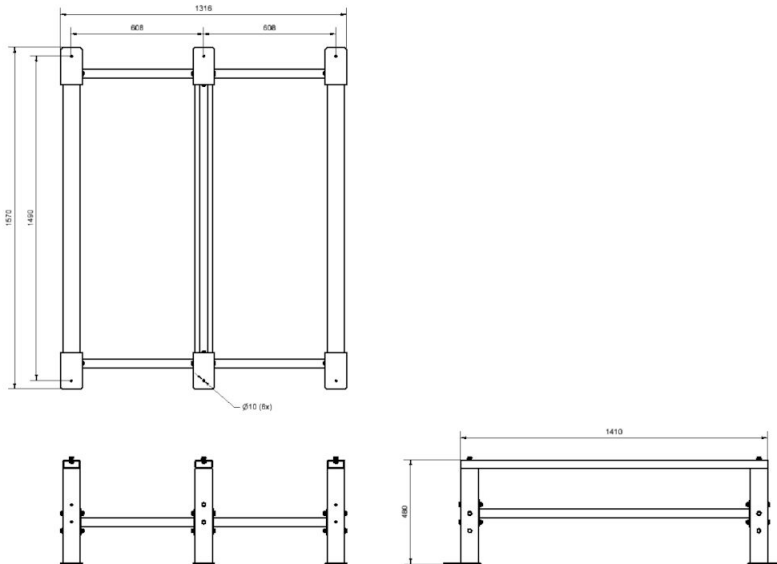
## OSF 2x2000 SM

OSF 2x2000 with inlet from right side:



## OSF 2x2000 SM

Dimension Extension Structure OSF2x2000\_OMF2x4000,  
accessory 12401164:



Dimension Fan Enclosure OSF2x2000\_3x2000\_4x2000\_5x200\_OMF2x4000\_4x4000,  
accessory 12401109:

