

## Exhaust rail system 920 for vehicles in motion

---



Efficient system for trucks, cars and vans in motion. Includes balancer, damper and shock absorber on trolley and safety coupling on exhaust hose for maximum operational safety. Available with automatic disconnection of the nozzle. The 920/1500 trolley is specially designed for moving vehicles. The maximum design airflow is 1500 m<sup>3</sup>/h per trolley.

- Automatic damper to reduce noise and unnecessary extraction of air when not in use
- Available with automatic disconnection and safety devices
- Low sound level
- Safety coupling, prevents damage on vehicle

Product name	Exhaust rail system 920 for vehicles in motion
Material	Rail: Aluminium Sealing lips: EPDM rubber Trolley: Glassfibre Composite
Operating Temperature	Max 150 ° C ( 300 ° F)
Type of hose	[NRCP]
Hose length (m)	6



## Exhaust rail system 920 for vehicles in motion

Description	Diameter, hose (mm)	[model]
Extraction unit 920/1500 for manual disconnection and with hose suspension	100	20913120
Extraction unit 920/1500 with automatic disconnection	100	20913520*
Extraction unit 920/1500 for manual disconnection and with hose suspension	150	20913320
Extraction unit 920/1500 with automatic disconnection	150	20913720**

\*Includes nozzle no. 20806161

\*\*Includes nozzle no. 20806561

Hose type	Specification	Temperature range, °C	Hose fittings in free hose end, distribution hose	Hose fitting on free hose end, inlet hose	Hose connection on reel, distribution hose	Hose connection on reel, inlet hose
NRCP		-40 to +150 Deg. C (Intermittent +170 Deg. C)				




## Exhaust rail system 920 for vehicles in motion

	[accessory]	[partno]
	Exhaust rail 920 L= 5.0 m (17')	20916120*
	Exhaust rail 920 L= 7.5 m (25')	20916220*
	Exhaust rail 920 L= 10.0 m (33')	20916320*
	Exhaust rail 920 L= 12.5 m (41')	20916420*
	Exhaust rail 920 L= 15.0 m (50')	20916520*
	Exhaust rail 920 L= 17.5 m (57')	20916620*
	Exhaust rail 920 L= 20.0 m (66')	20916720*
	Exhaust rail 920 L= 22.5 m (74')	20916820*
	Exhaust rail 920 L= 25.0 m (82')	20916920*
	Exhaust rail 920 L= 27.5 m (90')	20917020*
	Exhaust rail 920 L= 30.0 m (99')	20917120*
	Exhaust rail 920 L= 32,5 m (106')	20918220*
	Exhaust rail 920 L= 35.0 m (115')	20917220*
	Exhaust rail 920 L= 40,0 m (132')	20917320*
	Exhaust rail 920 L= 45,0 m (148')	20917420*
	Exhaust rail 920 L= 50,0 m (165')	20917520*
	Extraction unit 920/1500 for stationary vehicles to be used with a Ø150 hose.	20919020
	Extraction unit 920/400 for Stationary vehicles to be used with a Ø100 hose.	20919320
	Extraction unit 920/400 with balancer for stationary vehicles to be used with a Ø100 hose.	20919220
	Extraction unit 920/1500 without balancer for stationary vehicles to be used with a Ø150 hose.	20919120
	Exhaust hose nr-cp l=5m d=102mm	20807962
	Exhaust hose nr-cp l=10m d=102mm	20808162

## Exhaust rail system 920 for vehicles in motion

	[accessory]	[partno]
	Exhaust hose nr-cp l=5m d=127mm	20808362
	Exhaust hose nr-cp l=5m d=152mm	20808762
	Exhaust hose nr-cp l=10m d=152mm	20808962
	Exhaust hose nr-cp l=2.5m d=100mm	20820362
	Exhaust hose nr-cp l=5m d=100mm	20820462
	Exhaust hose nr-cp l=7.5m d=100mm	20820562
	Exhaust hose nr-cp l=10m d=100mm	20820662
	Exhaust hose nr-cp l=2.5m d=125mm	20820762
	Exhaust hose nr-cp l=5m d=125mm	20820862
	Exhaust hose nr-cp l=7.5m d=125mm	20820962
	Exhaust hose nr-cp l=10m d=125mm	20821062
	Exhaust hose nr-cp l=2.5m d=150mm	20821162
	Exhaust hose nr-cp l=5m d=150mm	20821262
	Exhaust hose nr-cp l=7.5m d=150mm	20821362
	Exhaust hose nr-cp l=10m d=150mm	20821462
	Hose suspension, hard plastic Ø100 mm	20373607
	Hose suspension, hard plastic Ø125 mm	20373608
	Hose suspension, hard plastic Ø150 mm	20373609
	Top outlet Ø200 for 920	20374246
	Safety coupling ø100 (4")	20373797
	Safety coupling ø150 (6")	20373798
	Balancer trolley 920	20374652**

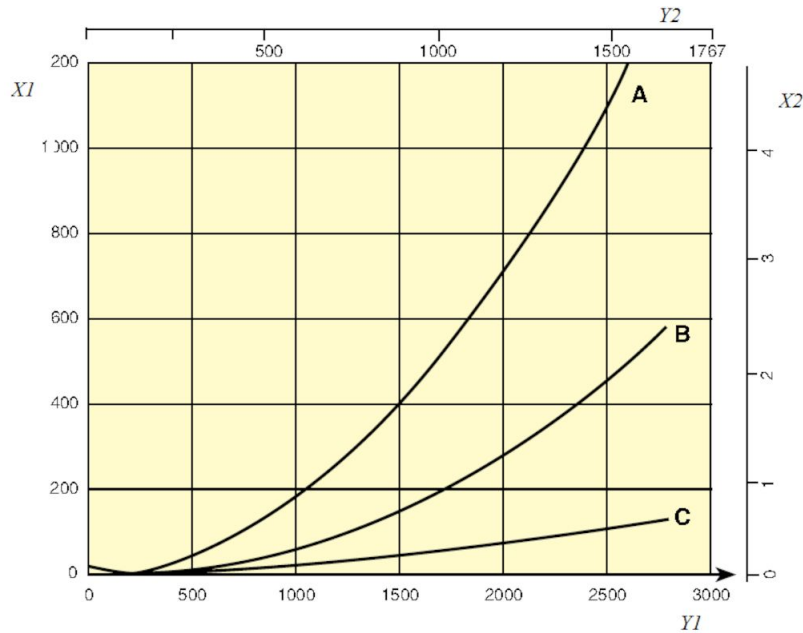
## Exhaust rail system 920 for vehicles in motion

	[accessory]	[partno]
	Trolley return unit 920/1500	20801144
	Balancer with 8 m cord ø 4 mm, 5-11 kg	20800431**
	Balancer with 8 m cord ø 4 mm, 7-15 kg	20800631**

\*Complete with suspension parts, joint connectors, rubber seals, end covers and end stops.

\*\*For extra long hose

## Exhaust rail system 920 for vehicles in motion



Pressure drop 920 Rail

X1= Pressure, Pa

Y1 = Air flow, m<sup>3</sup>/h

X2 = Pressure, in. w.g.

Y2 = Airflow, CFM

A= Top connection, Ø200 mm

B= Side connection, Ø160 mm

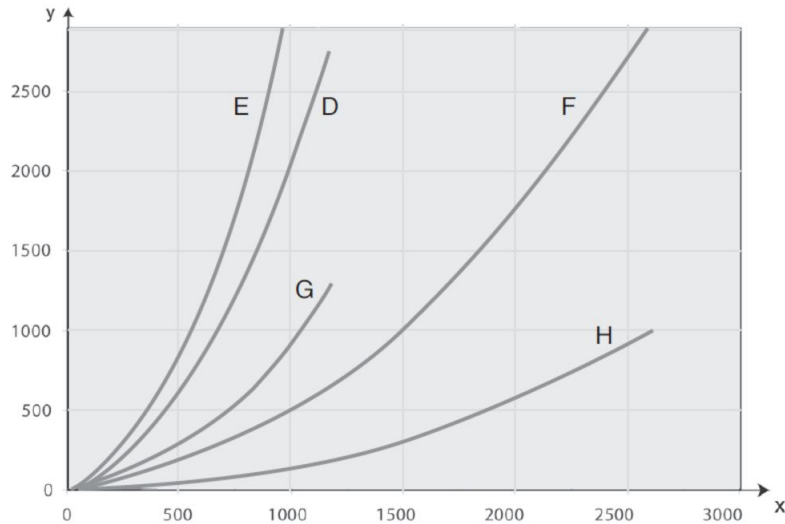
C= Rail 920, per metre (Pa/m)

Airflow recommendations:

Car: 400 - 600 m<sup>3</sup>/h (235 - 350 cfm)

Truck/Bus: 1000 - 1200 m<sup>3</sup>/h (590 - 700 cfm)

## Exhaust rail system 920 for vehicles in motion



Pressure drop extraction units and trolleys

D = Extraction unit 400, 5 m Ø 100 mm

E = Extraction unit 400, 7.5 m Ø 100 mm

F = Extraction unit 1500, 5 m Ø 150 mm

G = Trolley 400 (without hose)

H = Trolley 1500 (without hose)

Airflow recommendations:

Car: 400 - 600 m<sup>3</sup>/h ( 235 - 350 cfm)

Truck /Bus: 1000 - 1200 m<sup>3</sup>/h ( 590 - 700 cfm)

Max design airflow / trolley:

Trolley 400: 400 m<sup>3</sup>/h ( 235 cfm)

Trolley 1500: 1500 m<sup>3</sup>/h ( 885 cfm)