

Exhaust rail system 920 for vehicles in motion



Efficient system for trucks, cars and vans in motion. With damper and shock absorber on trolley and safety coupling on exhaust hose for maximum operational safety. Available with automatic disconnection of the nozzle. The 920/1500 trolley is specially designed for moving vehicles. The maximum design airflow is 1500 m³/h (880 cfm) per trolley.

- Dampers to reduce noise and unnecessary extraction of air when not in use
- Automatic disconnection and safety devices
- Low sound level
- Safety coupling, prevents damage on vehicle
- Automatic disconnection, efficient for vehicles in motion

Product name	Exhaust rail system 920 for vehicles in motion
Material	Rail - Aluminum, SS 4104 (ASTM B 221 AA 6063)
Operating Temperature	Max 150 °C (300 °F)
Type of hose	NR-CP
Hose length (ft)	20



Exhaust rail system 920 for vehicles in motion

Description	Diameter, hose (in)	Model
Extraction unit 920/1500 for VIM	4	20913120
Extraction unit 920/1500 for VIM	4	20913520*
Extraction unit 920/1500 for VIM	6	20913320
Extraction unit 920/1500 for VIM	6	20913720**

*Includes nozzle no. 20806161

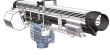




**Includes nozzle no. 20806561

Hose type	Specification	Temperature range, °C	Hose fittings in free hose end, distribution hose	Hose fitting on free hose end, inlet hose	Hose connection on reel, distribution hose	Hose connection on reel, inlet hose
NRCP	Polyester fabric, EPDM/PP coated. Helix in Polyester with EPDM cover. Max bending radius 22.5cm (inside)	-40 to +150 Deg. C (Inttermittent +170 Deg. C)				

Exhaust rail system 920 for vehicles in motion

Accessory		Part No
	Exhaust rail 920 L= 5.0 m (17')	20916120*
	Exhaust rail 920 L= 7.5 m (25')	20916220*
	Exhaust rail 920 L= 10.0 m (33')	20916320*
	Exhaust rail 920 L= 12.5 m (41')	20916420*
	Exhaust rail 920 L= 15.0 m (50')	20916520*
	Exhaust rail 920 L= 17.5 m (57')	20916620*
	Exhaust rail 920 L= 20.0 m (66')	20916720*
	Exhaust rail 920 L= 22.5 m (74')	20916820*
	Exhaust rail 920 L= 25.0 m (82')	20916920*
	Exhaust rail 920 L= 27.5 m (90')	20917020*
	Exhaust rail 920 L= 30.0 m (99')	20917120*
	Exhaust rail 920 L= 32.5 m (106')	20918220*
	Exhaust rail 920 L= 35.0 m (115')	20917220*
	Exhaust rail 920 L= 40.0 m (132')	20917320*
	Exhaust rail 920 L= 45.0 m (148')	20917420*
	Exhaust rail 920 L= 50.0 m (165')	20917520*
	Extraction unit 920/1500 for stationary vehicles to be used with a Ø150 hose.	20919020
	Extraction unit 920/400 for Stationary vehicles to be used with a Ø100 hose.	20919320
	Extraction unit 920/400 with balancer for stationary vehicles to be used with a Ø100 hose.	20919220
	Extraction unit 920/1500 without balancer for stationary vehicles to be used with a Ø150 hose.	20919120
	Top outlet Ø200 (8 in) for 920	20374246
	Balancer trolley 920	20374652**

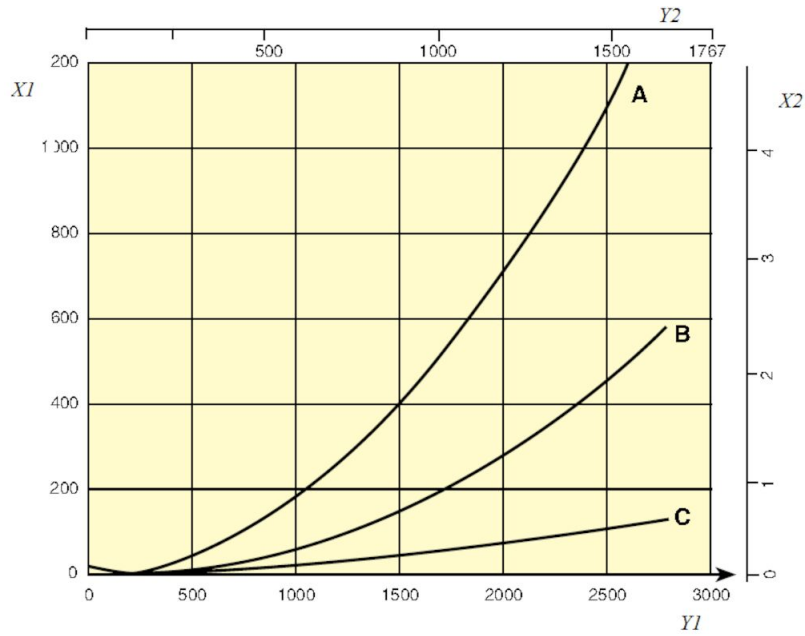
Exhaust rail system 920 for vehicles in motion

Accessory		Part No
	Trolley return unit 920/1500	20801144
	Balancer with 26 feet cord diam. 5/32 inch, 11 - 24 lb.	20800431**
	Balancer with 26 feet cord diam. 5/32 inch, 22 - 30 lb.	20800631**
	Trolley 920/1500 for hose 160 mm (6 1/4"), includes balancer and damper.	20374380
	Trolley 920/1500 for hose 160mm (6 1/4"), with damper, without balancer.	20374379
	Safety coupling ø125 (5")	20374264
	End stop Complete	20373836

*Complete with suspension parts, joint connectors, rubber seals, end covers and end stops.

**For extra long hose

Exhaust rail system 920 for vehicles in motion



Pressure drop 920 Rail

X1= Pressure, Pa

Y1 = Air flow, m³/h

X2 = Pressure, in. w.g.

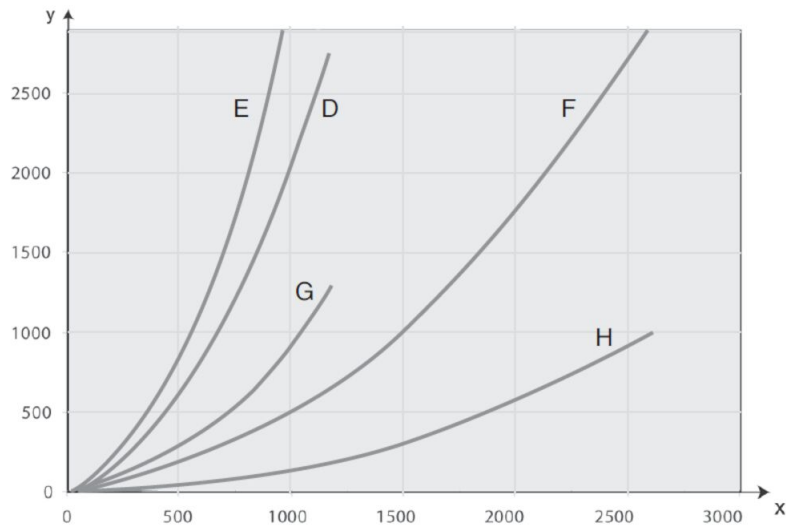
Y2 = Airflow, CFM

A= Top connection, Ø200 mm

B= Side connection, Ø160 mm

C= Rail 920, per metre (Pa/m)

Exhaust rail system 920 for vehicles in motion



Pressure drop extraction units and trolleys

D = Extraction unit 400, 5 m Ø 100 mm

E = Extraction unit 400, 7.5 m Ø 100 mm

F = Extraction unit 1500, 5 m Ø 150 mm

G = Trolley 400 (without hose)

H = Trolley 1500 (without hose)