

ALU 150/250

An advanced exhaust extraction system.



ALU 150/250 is an advanced exhaust rail system for high frequency use, developed to meet the requirements from e.g. vehicle manufacturers and inspection center.

- High quality components
- Two standard rail sizes
- Complete program of accessories for extraction units

Product name	ALU 150/250
Type of hose	[NRCP]







ALU 150/250

[image]	Description	Diameter, hose (in)	Hose length (ft)	[model]
	ALU 150, length = 2.5m (8')			20900510*
	ALU 150, length = 5.0m (16')			20900610*
	ALU 150, length = 7.5m (24.5')			20900710*
	ALU 150, length = 10.0m (33')			20900810*
	ALU 150, length = 12.5m (41')			20900910*
	ALU 150, length = 15.0m (49')			20901010*
	ALU 150, length = 17.5m (57.4')			20901110*
	ALU 150, length = 20.0m (65.6')			20901210*
	ALU 150, length = 22.5m (73.8')			20901310*
	ALU 150, length = 25.0m (82')			20901410*
	ALU 150, length = 27.5m (90')			20901510*
	ALU 150, length = 30.0m (98.4')			20901610*
	ALU 150, length = 35.0m (114.8')			20901710*
	ALU 150, length = 40.0m (131.2')			20901810*
	ALU 150, length = 45.0m(147.6')			20901910*

ALU 150/250

[image]	Description	Diameter, hose (in)	Hose length (ft)	[model]
	ALU 150, length = 50.0m (164')			20902010*
	ALU 250, length = 2.5m (8')			20910510**
	ALU 250, length = 5.0m (16.4')			20910610***
	ALU 250, length = 7.5m (24.5')			20910710***
	ALU 250, length = 10.0m (33')			20910810***
	ALU 250, length = 12.5m (41')			20910910***
	ALU 250, length = 15.0m (49')			20911010***
	ALU 250, length = 17.5m (57.4')			20911110***
	ALU 250, length = 20.0m (65.6')			20911210***
	ALU 250, length = 22.5m (73.8')			20911310***
	ALU 250, length = 25.0m (82')			20911410***
	ALU 250, length = 27.5m (90')			20911510***
	ALU 250, length = 30.0m (98.4')			20911610***
	ALU 250, length = 35.0m (114.8')			20911710***
	ALU 250, length = 40.0m (131.2')			20911810***

ALU 150/250

[image]	Description	Diameter, hose (in)	Hose length (ft)	[model]
	ALU 250, length = 45.0m (147.6')			20911910****
	ALU 250, length = 50.0m (164')			20912010****
	Extraction unit, automatic disconnection, car	100	5	20900310****
	Extraction unit, automatic disconnection, LCV/ HCV	150	5	20900410****
	Extraction unit, manual disconnection, LVC/ HVC	150	7,5	20902610****
	Extraction unit, automatic disconnection, LCV/ HCV	150	7,5	20902710*****

*Straight exhaust rail ALU 150 incl. suspension brackets. For lengths > 50 m, please contact your Nederman dealer.

**Incl. suspension brackets, pressure drop at 2500 m³/h (1470 cfm)= appr 30 Pa (0.12 in wg). (For lengths > 50 m, please contact your Nederman dealer.

***Incl. suspension brackets, pressure drop at 2500 m³/h (1470 cfm)= appr 30 Pa. (0.12 in wg) For lengths > 50 m, please contact your Nederman dealer.




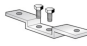

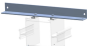

****Delivered with trolley, balancer, exhaust hose and nozzle.

Hose type NR-CP.

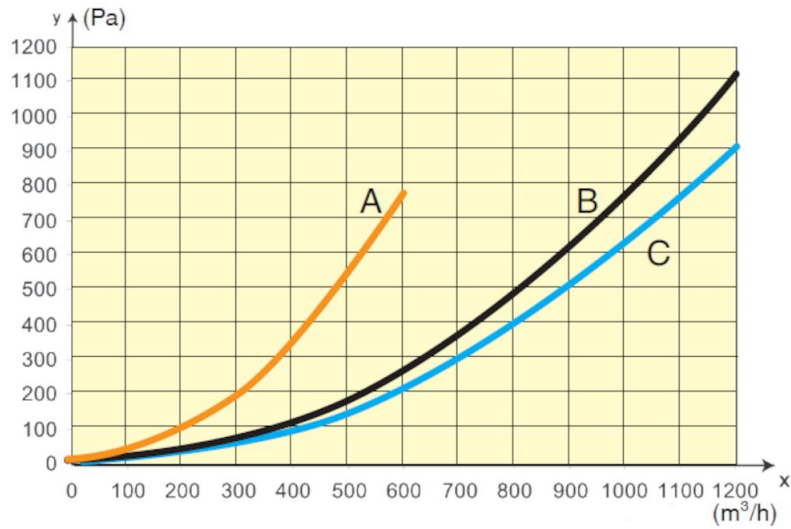
*****Delivered with trolley, balancer, exhaust hose and nozzle.

Hose type	Specification	Temperature range, °C	Hose fittings in free hose end, distribution hose	Hose fitting on free hose end, inlet hose	Hose connection on reel, distribution hose	Hose connection on reel, inlet hose
NRCP		-40 to +150 Deg. C (Intermittent +170 Deg. C)				

ALU 150/250

	[accessory]	[partno]
	Hydraulic limit stop for ALU150/250	20941410
	Extractor side ALU 150 ø200 (8")	20940610
	Extractor side ALU 250 ø250 (10")	20940710
	Extractor top ø250 (10")	20940410
	Extractor top side ø250 (10")	20940510
	Suspension adapter for bracket 5pcs	20940110
	Wall bracket 600mm	20947510
	Wall bracket 1500mm	20947610
	Internal support for ALU150/250 10	20941110
	Rail stiffener, one per meter of rail	20373942
	Exhaust trolley Maxi ø200mm, up to 3 000 m³/h	20940310
	Exhaust trolley for fume extractor	20940210
	Holder for balancer std trolley	20941310
	Support for balancer MAXI	20941210
	Extraction Trolley ALU150 Std ø150	20943210
	Ext. trolley ALU150 ø150 (6") std damper	20943410
	Extraction trolley Reel on rail	20948610
	Joint kit for extension of rail length	20815964
	Transmitter Gen-2B	89115580

ALU 150/250

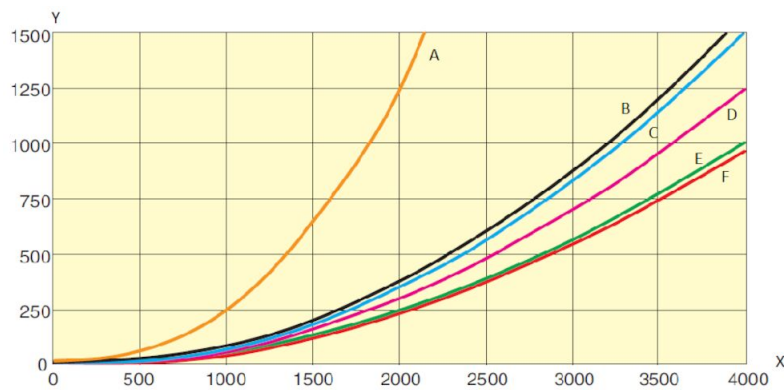


Pressure drop extraction units with

A= hose Ø 100 mm, 5 m

B= hose Ø 150 mm, 7.5 m

C= hose Ø 150 mm, 5 m



Y= Pressure drop (Pa), X= air flow (m³/h)

A = Trolley fume extractor arm

B = Top Outlet - side Ø250

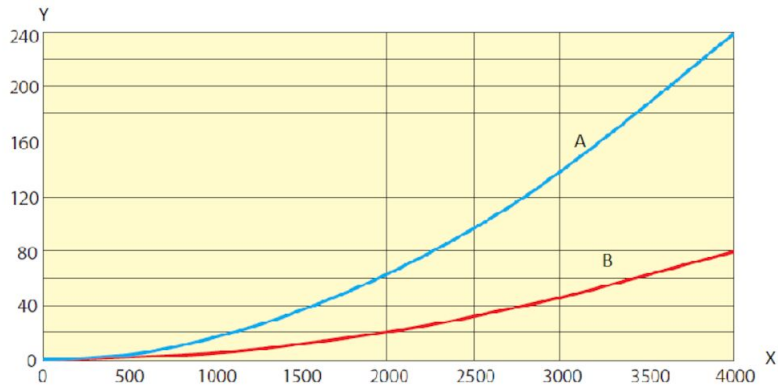
C = Maxi Trolley Ø200 without hose

D = Rail end outlet ALU 250 / Ø250

E = Top outlet Ø250

F = Rail end outlet ALU 150 / Ø250

ALU 150/250



Y = Pressure drop (Pa), X = air flow (m³/h)
A = ALU Ø150 mm
B = ALU Ø250 mm