

MOUNTING INSTRUCTION

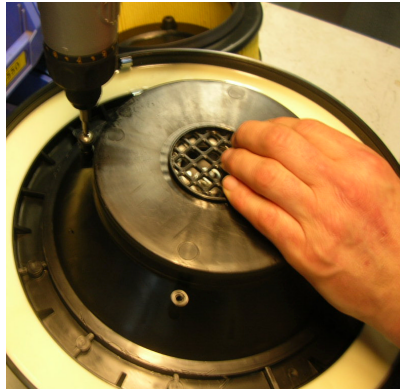
Micro-filter for Portable Vacuum Unit P160

No. 14899100

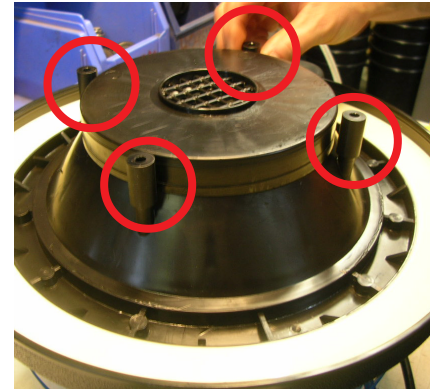
Change the micro-filter once a year or more often if vacuum performance decreases despite cleaning the fine filters. Ensure that the rubber gasket on the filter seals tightly against the bottom of the motor assembly. Leakage between micro-filter and fan inlet must not occur.



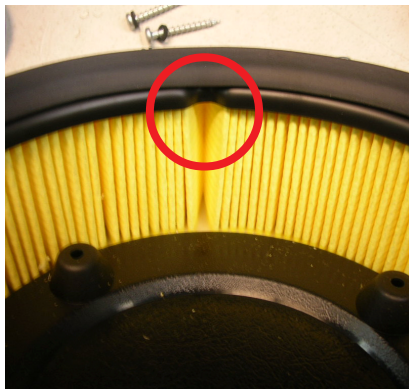
Use an approved breathing mask when changing the filter.



1 Dismount existing screws and distance sleeves.



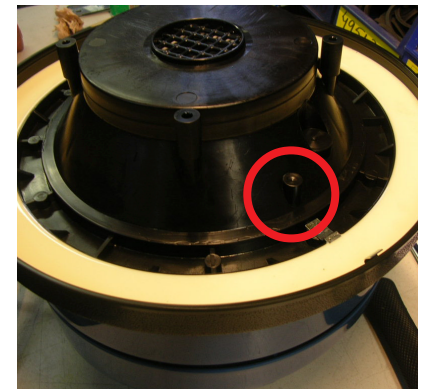
2 Position the new distance sleeves (enclosed with the new micro-filter) on the suction top.



3 Look for a gash in the micro-filter.



4 Put a piece of tape on the top of the micro-filter to know where the gash is when mounting.



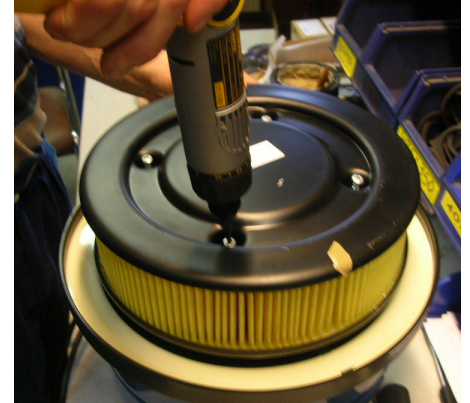
5 The micro-filter must be positioned with the gash coming over the part directed outwards on the suction top.



6 The micro-filter must be positioned with the gash coming over the part directed outwards on the suction top.



7 Position the washers on the screws.



8 Secure the micro-filter with screws and remove the piece of tape.