



Nederman

# Woodworking

Dust collection solutions  
for woodworking industries



# Take Control of your Factory Air

Dust generated by woodworking manufacturing processes create serious health and safety risks to workers and assets. Left uncontrolled, wood dust creates poor indoor air quality, accumulates on machinery causing accelerated wear and tear and creates combustible dust risks including fires and explosions. From small-to-large scale shops using hand tools to automated CNC machines, woodworking manufacturers need effective dust collection solutions to create a safe and productive work environment.

Processes common within woodworking factories including cutting, sanding, planing, edge banding, routing, drilling, create hazards such as poor indoor air quality, combustible dust risks and reduced productivity resulting from increased downtime.

In order to ensure a factory remains safe and productive, an effective and efficient approach to dust control needs to be taken. Upon being collected, reclaiming or recycling of the wood waste contributes to a more profitable and sustainable operation.

Nederman is The Clean Air Company and offers a complete line of dust collection equipment to support the woodworking industry. Our complete, turn-key solutions offer the following benefits:

- **Improved worker and facility safety**
- **Combustible dust compliance**
- **Energy efficient operation**
- **Flexibility for future expansion**
- **Healthier, cleaner environment**
- **Reduced machinery wear and tear**
- **Increased productivity and reduced downtime**
- **Improved product quality**



## Nederman woodworking solutions

- **Complete Solutions.** Nederman specializes in each layer of the dust collection system: capturing the fume, conveying (duct design), collecting and filtering the dust and the controls.
- **Industry Expertise.** Assessing the initial requirements to managing the installation, Nederman can be a one-stop shop for wood dust control solutions.
- **Future Proof Technology.** Technology that is built for now and in the future to improve the operation and maintenance of wood dust control systems.

## The global leader in clean air solutions for woodworking industry

As the world's leading provider of industrial air pollution control equipment, Nederman is your total solution provider for controlling woodworking dust. Whether the application is small or large, simple or complex, manual or automated, Nederman assesses each customers' unique needs and develops solutions that effectively and efficiently protect your workers and factory.



- **Industry Expertise.** Right solutions that ensure safety and efficient operation. With tens of thousands of successful installations, you can trust Nederman to get job done right.
- **Comprehensive Approach.** We manufacture the fans, duct, controls, safety devices and offer project, installation, commission and service support.
- **Solution Range.** A robust line-up of products and services that meet the unique needs of the woodworking industry.

### Combustible dust experts

Nederman is the global leader for ATEX and NFPA compliant dust collection solutions. Our comprehensive approach throughout the design, installation and maintenance processes sets us apart.

This approach begins with our sales and technical support teams who go through regular, rigorous training and follow a strict process to ensure the latest standards are being followed for each project. Next, we manufacture and select each component of the dust collection system including safety devices, so you can be confident you have a complete and compliant solution. Finally, Nederman offers both on-site and digital monitoring services to assist customers in the operation and maintenance of the system in a safe and compliant manner.

- **Quality and Reliability.** Problems that result in lost production impact the bottom line. Nederman solutions are engineered with this in mind to keep you operational.
- **Global Presence.** Regional sales offices and network of distribution partners uniquely positions Nederman to support your local factory or global operations.
- **Sustainability.** A commitment to sustainable, clean air solutions that are energy efficient and reclaim waste material.

### Did you know?

According to Dust Safety Science, approximately 25% of fires and explosions occurred within wood industries with dust collectors being the highest source of incidents and injuries.





# The Right Solution

Machinery, tools and processes vary widely across the wood working industry and a “one size fits all” approach to clean air is not always the best approach. Therefore, Nederman offers a complete range of industrial dust collection products and services for the controlling wood dust for machines and for general cleaning.

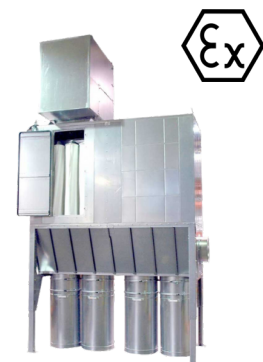
- Local Exhaust. Solutions for local, source control including CNC machines for single or multiple extraction points.
- On-Tool Source Capture. High-vacuum collectors for hand-held tools on single point or multiple extraction points.
- General Cleaning / Housekeeping. Over time, dust accumulates on floors and machine surfaces that require cleaning to reduce combustible dust risks and keep machines running smoothly.

## Local Exhaust Collectors

### LBR SmartFilter

Reverse air, modular baghouse suitable for production wood environments and configurable for wide range of dust loadings and air volumes. The filter is energy efficient, IIoT ready and features a wide range of options and accessories.

- Modular and configurable design
- Future-proof technology
- Field expandable as operational requirements change
- NFPA compliant and ATEX certified
- High efficiency, extended filter life and energy efficient



### NFPZ

Baghouse designed for small to medium-sized woodworking shops or facilities producing limited volumes of materials. Features a simple design to install and operate.

- Modular and configurable design
- High efficiency filters with automatic shaker cleaning
- Suitable for outdoor installation
- NFPA compliant and ATEX certified
- Bags, barrels or bin waste collection options

### S-Series

A simple, fast quiet and effective solution for local dust control that can be located indoors, next to the machine(s) (where legislation allows). Available in multiple sizes and configurations.

- Fast & convenient indoor installation with small footprint
- Quiet operation
- NFPA compliant within application guidelines
- Dust disposal options in bag, drum or dump bin
- Single or Three Phase controls
- Automated “shaker” cleaning option



## High-Vacuum Collectors

Nederman's High Vacuum solutions provide efficient, ATEX-certified dust collection for both industrial housekeeping and robotic applications in the woodworking industry. From mobile and central vacuum systems for floor and machine cleanup to integrated solutions for robotic sanding and cutting, our systems capture dust at the source—reducing fire hazards, improving air quality, and ensuring compliance with combustible dust regulations while optimising productivity.



## Material and Wood Waste Handling

Maximize energy efficiency and reliability when recovering and reusing wood waste with Nederman's material handling solutions. Featuring configurable chain conveyors, silos, and truck loading systems, our solutions optimize waste handling for new installations or upgrade existing pneumatic conveying systems. Reduce operational costs, improve productivity, and lower noise levels—all while streamlining your material handling process.



Chain Conveyors



Silos



Truck Loaders

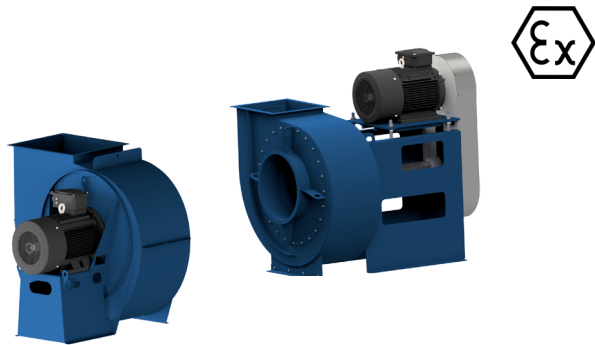


# Complete Solutions

## Accessories

### Exhaust Fans

Nederman's family of CombiFab industrial blowers offer a robust and energy efficient solution for wood dust collection systems. Available in multiple sizes, direct or belt driven and three types of fan wheels to meet unique operational needs.



### Combustible Dust Accessories

Complete line of combustible dust mitigation devices that protect the factory from explosion hazards originating in the filter. Complies with latest ATEX and NFPA standards.



### Nordfab QF Industrial Duct

Complete range of Nordfab Quick-Fit (QF) durable duct and fittings for building a complete extraction system. Compared to traditional ducting systems, the QF style duct offers installation savings, adapting to existing systems, improved cleaning and future flexibility.



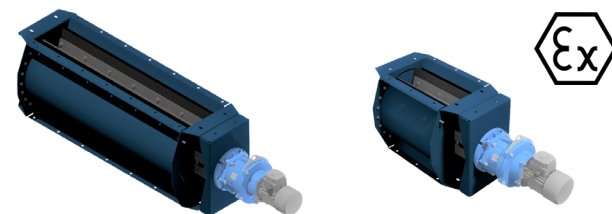
### Automation Controls

Advanced automation control offering including Variable Frequency Drives (VFD) that can control the complete filtration and waste handling system. Controls are IIoT ready for digital and remote monitoring.



### Rotary Valves

Robust and reliable rotary valves (air lock) that transfer material from dust collector to dust container or material transport system. Complies with ATEX and NFPA standards.



### Particulate Emission Monitors

Auburn FilterSense high-precision emissions monitors help ensure you filter is operating just as expected. These sensors monitor air quality when returning filtered air to the building, serve as broken bag detector, help achieve combustible dust compliance and can be used for compliance reporting.



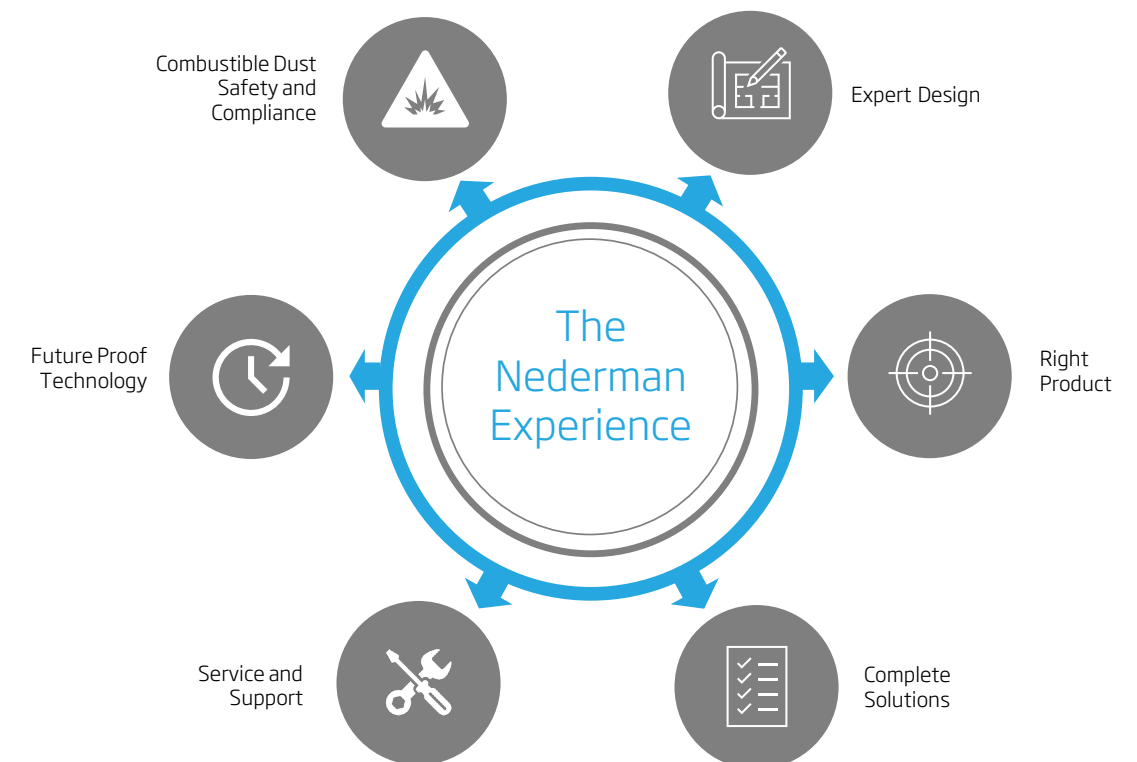
## Save money and Drive Operational Efficiency with System Upgrades

If you are looking to reduce cost and improve productivity on your existing dust collection system but not looking to start over, Nederman offer's a range of products and services that help manufacturers save energy, improve maintenance and operate systems more efficiently. Through digital monitoring of assets, intelligent airflow control or reliable wood waste management, our solutions help manufacturers improve their operations saving money and reducing downtime.



## The Clean Air Company

Nederman offers a comprehensive approach to clean air solutions for the woodworking industry. We consider ourselves a partner in our customers operation and are committed to helping them achieve a productive, profitable and sustainable future. Therefore, we provide complete, turn-key solutions beginning with the system design and continuing through the operation and service resulting in an effective, safe and efficient dust collection system.





# Shaping the Future of Clean Air

## Nederman SAVE

Nederman SAVE enhances the performance of new or existing wood dust collection systems. By utilizing machine and process information, SAVE automatically adjusts damper settings to regulate airflow, ensuring proper dust extraction and safe material transport. This process minimizes energy consumption, improves combustible dust safety, expands operational capacity, and reduces maintenance time, making it a valuable addition to any wood dust collection system.

### ■ Energy reduction

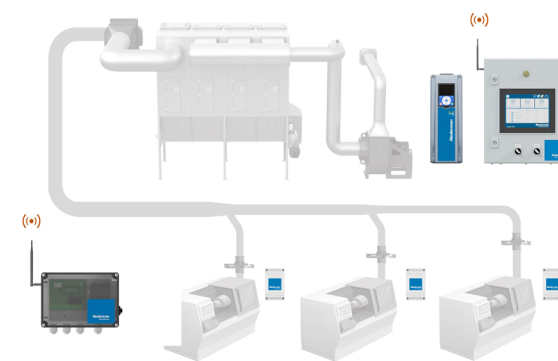
Achieve up to 70% savings through improved airflow control. Reduced load on HVAC systems also yields additional savings.

### ■ Production and maintenance data

SAVE technology monitors machine activity to optimize airflow allowing it to capture productivity information on each connected machine.

### ■ Quieter operation

Less exhaust air means lower fan speeds and less filter cleaning reducing the noise level in the factory and in the dust collector operation. Reduced load on HVAC systems also yields additional savings.



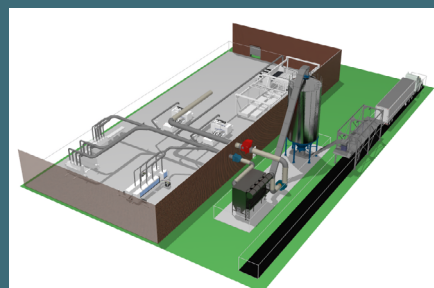
## Energy and process monitoring

Energy, process data collected with Nederman SAVE can be monitored and visualized through Nederman Insight allowing users to track machine utilization, process parameters and energy savings.



## Nederman ProQuote

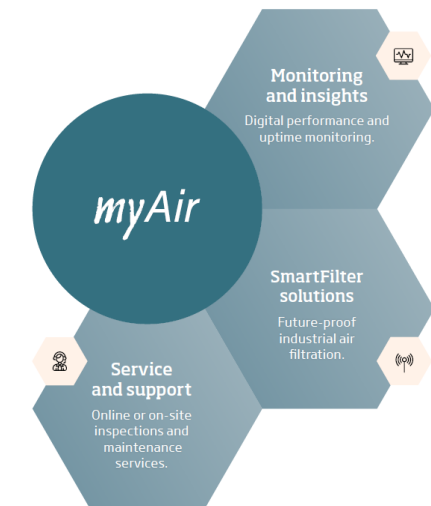
Nederman utilizes ProQuote, a state-of-the-art design tool, to quickly prepare accurate solutions that meet specifications, are energy efficient, and compliant with local regulations. The tool's 3D visualization feature helps manufacturers gain a clear understanding of the installation process, operation, and maintenance of the system, which in turn helps keep the project within budget.



# Nederman *myAir*<sup>TM</sup>

Prioritizing service or maintenance of their dust collection systems may be difficult, but impact these systems have on operations is important. Personal and asset safety, energy consumption, worker productivity, and sustainability are all impacted by how effective and efficient the filtration operates. To help wood industry manufacturers manage these systems, Nederman has developed the myAir platform.

The myAir scalable service offering includes SmartFilter solutions, traditional on-site inspection and maintenance services and connected, digital monitoring service called Nederman Insight. This comprehensive platform allows Nederman to craft a service offering catered to manufacturer's unique needs, helping our customers achieve more efficient approaches to health and safety, productivity, compliance and energy efficiency.



## Benefits of active monitoring and proper service

**Safety.** Wood dust presents a risks to workers and facilities from dust exposure, noise, and combustible dust hazards.

**Productivity.** Downtime for high-production wood facilities is expensive, especially for central dust collection systems that may protect multiple machines.

**Maintenance.** Most facilities lack expertise in operating dust collection equipment and optimizing performance.

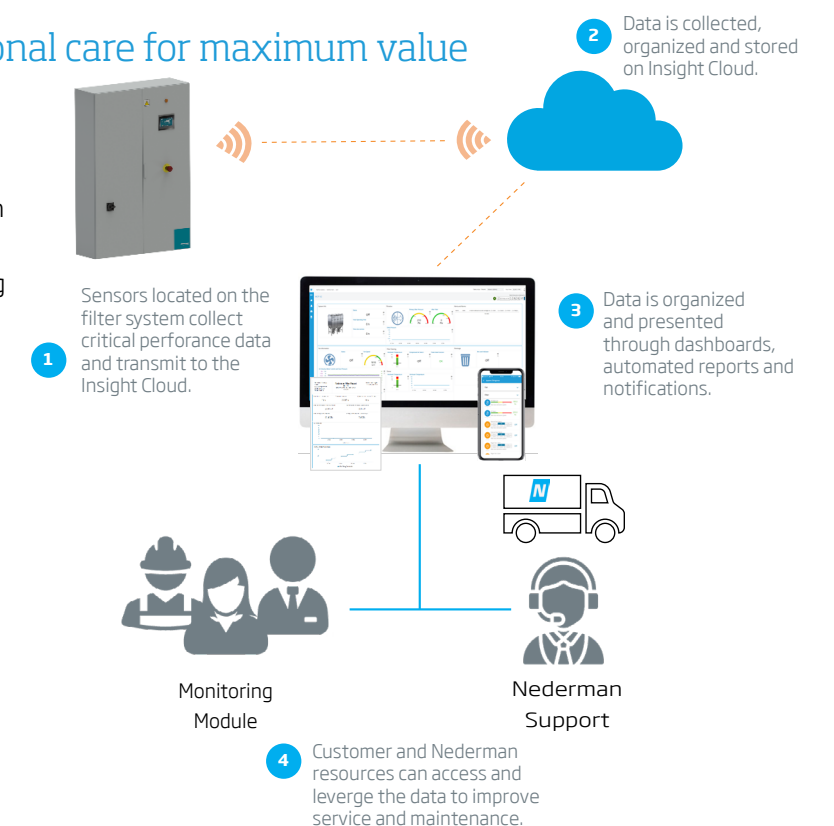
**Reduced Emissions.** Poorly maintained filtration systems increase emissions and pressure drop, reducing component life.

**Energy Efficiency.** Optimally designed and operated filtration systems can reduce energy consumption and costs, improving sustainability.

## Future-proof technology with traditional care for maximum value

Nederman believes in providing maximum value to its customers, and that's why we combine the precision of digital monitoring with the care of traditional services. With our Nederman Insight service, customers can remotely monitor their dust collection systems in real-time, receiving alerts about any issues that require attention. Our service team can then use this information to provide proactive, on-site maintenance and repair services, ensuring optimal system performance and minimizing downtime.

Nederman Insight also provides valuable data analytics and reports, helping customers optimize their systems and improve their overall operations. By combining digital precision with traditional care, we can offer our customers the best of both worlds and maximize their value.





# Experience & Competence You Can Trust

Over 80 years of experience developing products and solutions to reduce environmental strain and protect people from the harmful effects of indoor air pollution.



"When selecting Nederman as a partner the goal was to acquire a dust collection system which is known to be very reliable while finding the best ratio between price and performance, capable to be easily expanded in the future and (operated) separately for different production departments."

**ALVIC Group USA**  
**Woodworking Factory**



## Worldwide presence

Nederman has a strong global presence in both sales and production - with sales and distributor companies in over 50 countries and production performed in 13 countries on five continents. In many countries, we also have a well established service organization. By offering advanced service with high availability, Nederman helps customers to secure continuous, optimized production. We have extensive experience creating safe work environments, handling combustible dusts, managing turn-key projects and servicing dust collectors. Our innovative, smart solutions including Insight have further strengthened our ability to deliver clean air to our customers throughout the world.



"Marine Furniture is pleased with the cooperation with Nederman. Nederman has shown great professionalism from the moment of creating the offer, preparing documentation until the completion of the investment. The dust collector installation meets our expectations 100%!!"

**LBR Installation**  
**Woodworking factory in Poland**







**Nederman**

## The Clean Air Company

Nederman is an environmental technology company and a global leader in industrial air filtration dedicated to extracting, transporting and cleaning air to make industrial production more efficient, safe and sustainable. Based on industry leading products, solutions and services in combination with innovative IoT technology, we monitor and optimize performance and validate emissions compliance to protect people, planet and production.