

Extraction Arm Standard

For working environments with fumes, vapours or non explosive dust



Nederman Extraction Arm Standard is specially designed for working environments with fumes, vapours or non explosive dust, where the demands for higher airflows and temperatures are moderate. Typical workplaces can be welding schools, different types of applications in light production. The applications can be welding, grinding, or other industrial processes where an easily positioned arm is required. The arm is available in three lengths, 2, 3 and 4 m (7, 10 and 13 ft.) and equipped with a high efficiency extraction hood.

- The arm is flexible in all directions and simple to position.
- Designed for wall mounting and suspended by an integrated wall bracket

90 degree bend

- Allows rotation of 180 degrees (360 degrees for the 4m arm)
- Can be equipped with a damper placed in the bend as an accessory (not 4m arm)
- The hood can be tilted in all directions

Product name	Extraction Arm Standard
Noise level (dB(A))	67
Installation	Indoor
Fume temperature	Max 70° Celsius
Extraction arm diameter (mm)	160
Airflow (m ³ /h)	600 - 900
Colour	Blue
Diameter, hose (mm)	160
Note	Additional wall bracket needed. (Swivels 360 deg.)





Extraction Arm Standard

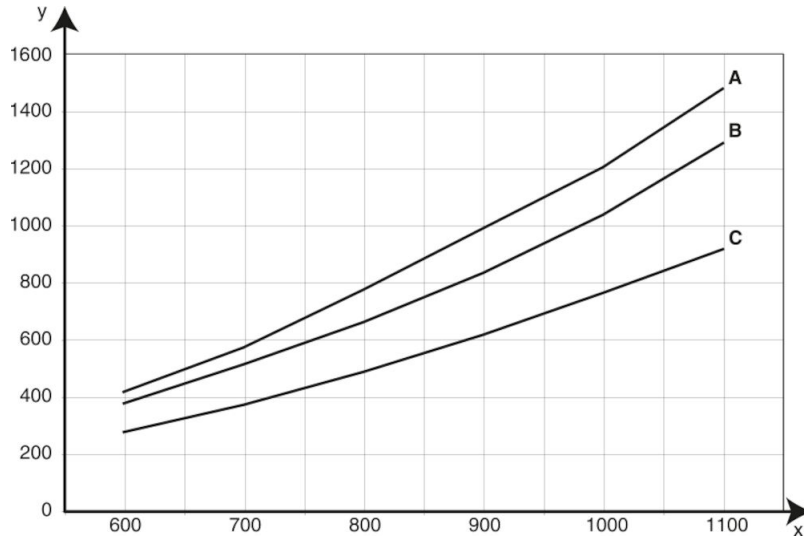
Description	Arm length (m)	Weight (kg)	Model
Extraction arm standard	2	11	10500238
Extraction arm standard	3	13	10500338
Extraction arm standard (vertical)	4	16,5	10500538*

**Additional wall bracket needed. (Swivels 360 deg.)*

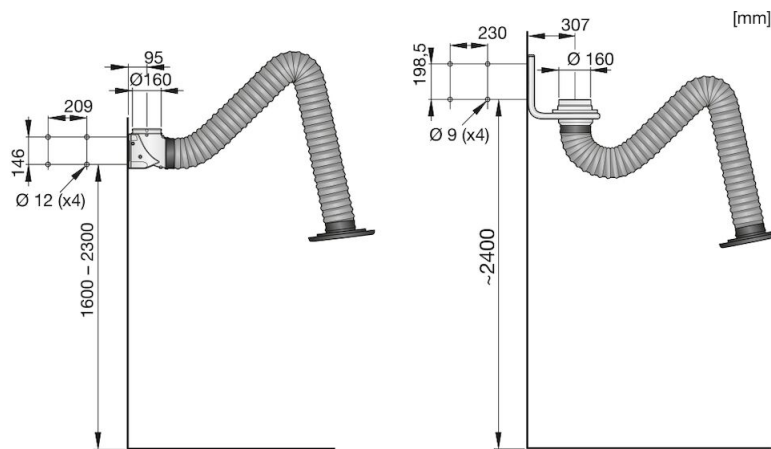
Extraction Arm Standard

Accessory		Part No
	Damper for Standard arm	10500438
	Fan bracket for standard arm	10374218

Extraction Arm Standard



X: airflow m³/h. Y: static pressure Pa. A: 4 m, B: 3 m, C: 2 m



Left: Standard arm 2 & 3m.

Right: Standard arm 4 m.