

Cable Reel series 793

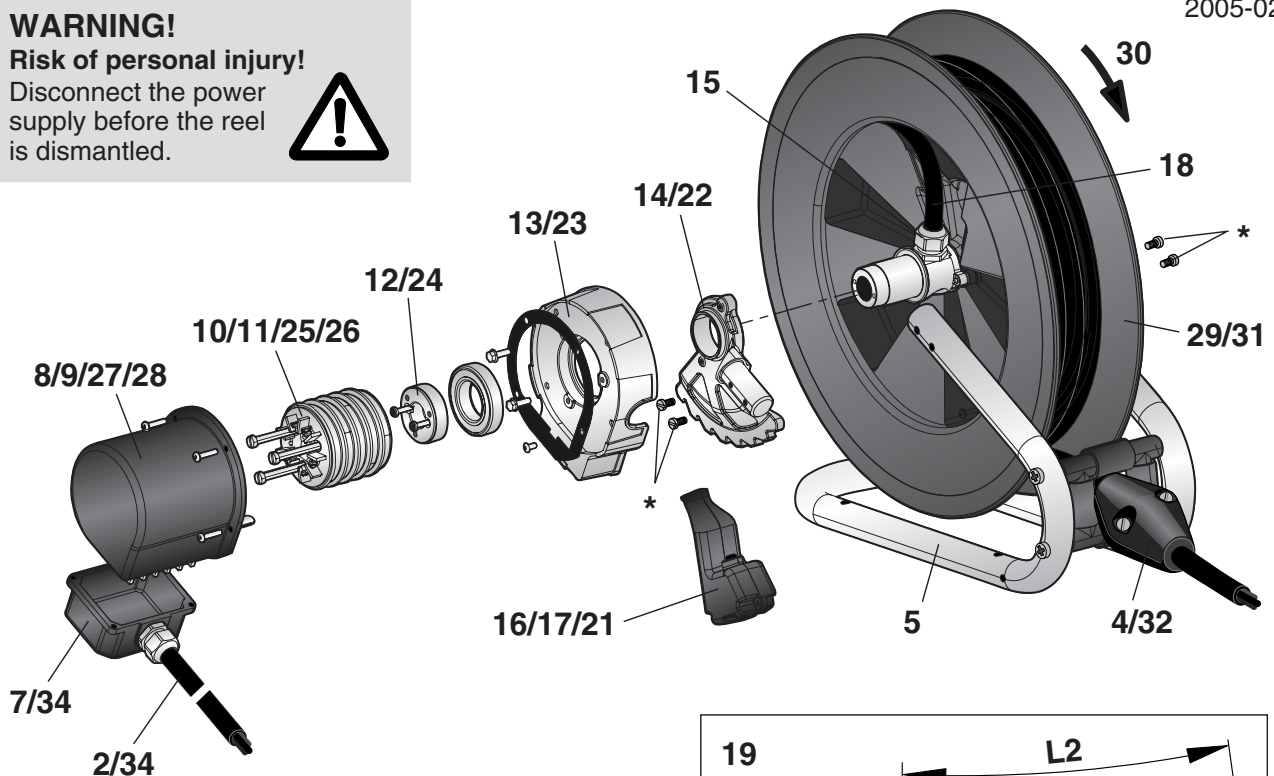
Instruction for changing the cable

148736/01
2005-02-01

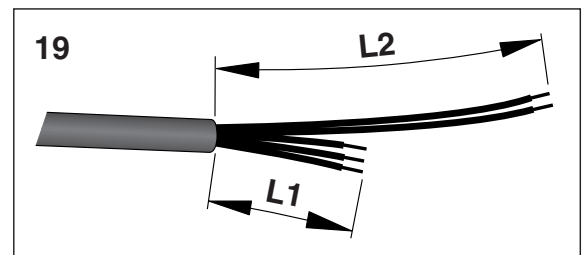
WARNING!

Risk of personal injury!

Disconnect the power supply before the reel is dismantled.



1. Remove any electric tool from the cable end.
2. Disconnect the inlet cable from the reel.
3. Remove the reel from wall or ceiling.
4. Remove the cable stop and let the cable coil on to the drum. **N.B. Count the number of revolutions that coil on to the drum.**
5. Loosen the stand from the drum (3 screws *).
6. Place the drum on a work bench.
7. Unscrew the top for connecting the inlet cable.
8. Unscrew all cable holders.
9. Unscrew the slipping cover (4 screws).
10. Loosen all conductors from the slipping device.
11. Unscrew the slipping device (3 screws).
12. Loosen the earthing ring (2 screws).
13. Remove the earthing plate.
14. Remove the ratchet plate.
15. Loosen the cable entry from the drum shaft.
16. Unscrew the thermal overload protector cover.
17. Loosen 1 black 1 grey and 1 brown conductor in the thermal overload protector.
18. Pull out the distribution cable from the drum shaft.
19. Strip the conductor lengths on the new cable according to the figure. Measure the lengths L1 and L2 on the old cable.
20. Fit the new cable.
 - black + grey + brown conductor to the thermal overload protector.
 - blue + yellow/green conductor through the drum shaft.
21. Fit the thermal overload protector cover.
22. Fit the ratchet plate.
23. Fit the earthing plate.



24. Fit the earthing ring.
25. Fit the slipping device.
26. Connect earth (= green/yellow) and neutral (= blue) to the slipping device.
27. Fit the slipping cover.
28. Check the operation of the carbon holders.
29. Fit the drum in the stand (3 screws *).
30. Coil all the cable on to the drum, by turning the drum in the direction of the arrow.
31. Pre-tension the spring by turning the drum (with all cable wound on) in the outdraw direction (against the direction of the arrow) 3 - 5 revolutions (see point 4).
32. Put the cable through the cable outlet and fit the cable stop.
33. Refit the cable reel on wall or ceiling.
34. Connect the inlet cable and fit the top on the slipping cover.
35. Connect the electric tool to the distribution cable.
36. Connect the power supply.

Check that the cable can be fully uncoiled without stretching the spring to its maximum. If not, decrease the spring tension.